



**STATE OF CONNECTICUT, DEPARTMENT OF PUBLIC SAFETY-  
INVESTIGATION REPORT (DPS-302-E) (REVISED 2/3/06)**

Report #: 1200704559 - 00171468

Report Type: Initial Report:  Prosecutors Report:  Supplement:  Re-open:  Assist:  Closing:

Attachments: Statements:  Teletype:  Photos:  Sketchmap:  Evidence:  Other:

CFS NO 1200704559	INCIDENT DATE 12/14/2012	TIME 09:41	INCIDENT DATE 12/14/2012	TIME	PRIMARY OFFICER JEWISS, DANIELE	BADGE NO 0336	INVESTIGATING OFFICER KIMBALL, JOHN P.	BADGE NO 0877
INCIDENT ADDRESS 00012 Dickinson Dr/ Newtown 06482					APARTMENT NO	TOWN CD	TYPE OF EXCEPTIONAL CLEARANCE Not Applicable	CASE STATUS Active

Supplemental Report: Garmin Nuvi Model 550 (Exhibit #58 from Case # 12-00705354)

On Wednesday July 31, 2013, at approximately 0922 hours, I was assigned by WDMCS Troop G Supervisor, Sergeant Michael DeCesare #205, the task of examining a Garmin Nuvi Model 550 Global Positioning System (GPS) device which had been turned over by the FBI to the CSP. This item was originally seized from the Lanza home pursuant to a State Search Warrant, and then turned over to the FBI for a forensic examination.

It was later learned that Detective Michael Mudry had previously examined the GPS unit. Therefore, I have no additional findings to report. (Refer to Detective Mudry's reports.)

Attached: CD-ROM containing GPS Report

Case Status: Case Active

THE UNDERSIGNED, AN INVESTIGATOR HAVING BEEN DULY SWORN DEPOSES AND SAYS THAT: I AM THE WRITER OF THE ATTACHED POLICE REPORT PERTAINING TO THIS INCIDENT NUMBER. THAT THE INFORMATION CONTAINED THEREIN WAS SECURED AS A RESULT OF (1)MY PERSONAL OBSERVATION AND KNOWLEDGE; OR (2)INFORMATION RELAYED TO ME BY OTHER MEMBERS OF MY POLICE DEPARTMENT OR OF ANOTHER POLICE DEPARTMENT;OR (3)INFORMATION SECURED BY MYSELF OR ANOTHER MEMBER OF A POLICE DEPARTMENT FROM THE PERSON OR PERSONS NAMED OR IDENTIFIED THEREIN, AS INDICATED IN THE ATTACHED REPORT. THAT THE REPORT IS AN ACCURATE STATEMENT OF THE INFORMATION SO RECEIVED BY ME.				
INVESTIGATOR SIGNATURE: <b>/TFC JOHN P KIMBALL/</b>	INVESTIGATOR I.D.#: 0877	REPORT DATE: 09/11/2013 01:50 pm 00990	SUPERVISOR SIGNATURE <b>/SGT JOSHUA PATTBERG/</b>	SUPERVISOR I.D.#: 0130



**CONNECTICUT STATE POLICE**  
**WESTERN DISTRICT MAJOR CRIME SQUAD**  
*CFS # 12-00 704 559      Sandy Hook Elementary School*



**Supplemental Report: Garmin Nuvi Model 550 (Exhibit #58 from CFS # 12-00705354)**

On Wednesday July 31, 2013, at approximately 0922 hours, I was assigned by WDMCS Troop G Supervisor, Sergeant Michael DeCesare #205, the task of examining a Garmin Nuvi Model 550 Global Positioning System (GPS) device which had been removed from a 2010 Honda Civic (Connecticut Passenger Plate: 872YEO) located at the Sandy Hook Elementary School.

Upon first examination, I determined the device battery was dead. I used a Mini-USB cable to connect the Garmin to my department Hewlett Packard laptop computer. In addition to powering the unit, this method allowed me to inspect the internal memory of the GPS device from my laptop.

I went into the internal "Settings" of the unit, which included parameters accessible to the user, such as: Favorites, Custom Routes, Home. The following information was of note.

Recently Found – Contained the following entries:

"Cracker Barrel"  
227 Whiting Farms Road  
Holyoke MA 01040  
413-493-1831

"21 Club"  
21 West 52<sup>nd</sup> Street  
Manhattan, NY 10019

"Central Park West Drive"

"014"  
Mapping determined this was a location on Rt. 25 near 49<sup>th</sup> St. in Sunnyside, NY.

"Gunks Lake Minnie"  
N 41 43.800  
W 74 14.146  
Upper Awosting Carriageway  
Wallkill, NY 12589  
(Near Lake Minnewaska)



**CONNECTICUT STATE POLICE**  
**WESTERN DISTRICT MAJOR CRIME SQUAD**  
*CFS # 12-00 704 559      Sandy Hook Elementary School*

---



“Car”

N 41 43.800

W 74 14.146

Appears to be redundant with the previous entry.

“Laguardia – Terminal A”

“Lotus Restaurant”

409 Hartford Turnpike

Vernon Town, CT 06066

860-871-8962

“Golfland”

76 Hartford Turnpike

Vernon Town, CT 06006

860-645-7073

“St Antony”

36 West Nyack Road

Favorite Places – One Favorite location was entered:

The American Military Museum

1918 Rosemead Boulevard

South El Monte, CA 91733

626-442-1776

Address Book –

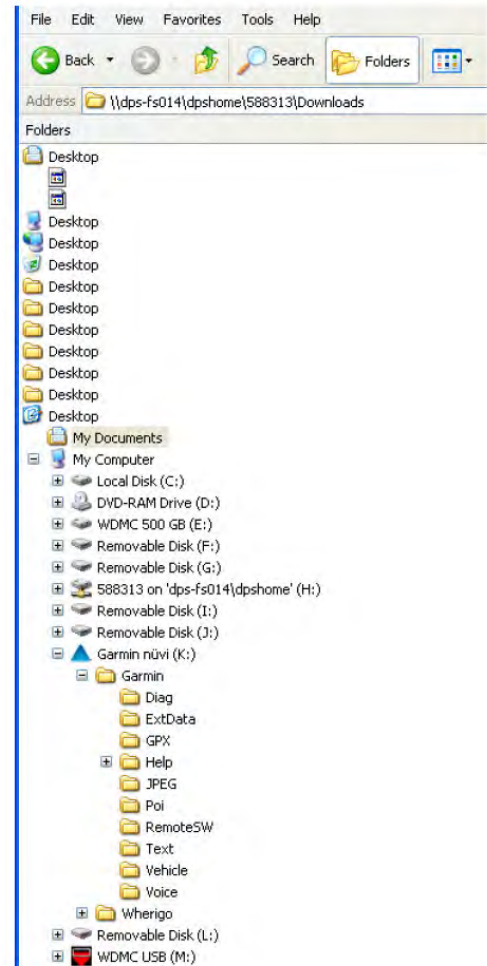


**CONNECTICUT STATE POLICE**  
**WESTERN DISTRICT MAJOR CRIME SQUAD**  
*CFS # 12-00 704 559      Sandy Hook Elementary School*



Custom Routes

Using Windows Explorer, I navigated to the Garmin nuvi\Garm\GPX folder, which contained a file named: "Current.gpx." Upon copying this file to the hard drive of my computer, I opened the file using the Google Earth program.





**CONNECTICUT STATE POLICE**  
**WESTERN DISTRICT MAJOR CRIME SQUAD**  
CFS # 12-00 704 559      *Sandy Hook Elementary School*



Placas

Tracks
<input checked="" type="checkbox"/> ACTIVE LOG: 23 APR 2012 15:54
<input checked="" type="checkbox"/> ACTIVE LOG: 24 APR 2012 20:40
<input checked="" type="checkbox"/> ACTIVE LOG: 25 APR 2012 00:16
<input checked="" type="checkbox"/> ACTIVE LOG: 27 APR 2012 20:27
<input checked="" type="checkbox"/> ACTIVE LOG: 09 MAY 2012 18:59
<input checked="" type="checkbox"/> ACTIVE LOG: 11 MAY 2012 19:05
<input checked="" type="checkbox"/> ACTIVE LOG: 18 MAY 2012 20:08
<input checked="" type="checkbox"/> ACTIVE LOG: 22 MAY 2012 28:09
<input checked="" type="checkbox"/> ACTIVE LOG: 24 MAY 2012 28:13
<input checked="" type="checkbox"/> ACTIVE LOG: 27 MAY 2012 14:37
<input checked="" type="checkbox"/> ACTIVE LOG: 01 JUN 2012 :8:35
<input checked="" type="checkbox"/> ACTIVE LOG: 02 JUN 2012 :8:41
<input checked="" type="checkbox"/> ACTIVE LOG: 13 JUN 2012 :0:06
<input checked="" type="checkbox"/> ACTIVE LOG: 13 JUN 2012 :1:37
<input checked="" type="checkbox"/> ACTIVE LOG: 16 JUN 2012 :5:54
<input checked="" type="checkbox"/> ACTIVE LOG: 16 JUN 2012 :6:45
<input checked="" type="checkbox"/> ACTIVE LOG: 16 JUN 2012 :9:05
<input checked="" type="checkbox"/> ACTIVE LOG: 16 JUN 2012 :9:25
<input checked="" type="checkbox"/> ACTIVE LOG: 30 JUN 2012 07:07
<input checked="" type="checkbox"/> ACTIVE LOG: 30 JUN 2012 09:29
<input checked="" type="checkbox"/> ACTIVE LOG: 28 JUL 2012 13:22
<input checked="" type="checkbox"/> ACTIVE LOG: 28 JUL 2012 13:28
<input checked="" type="checkbox"/> ACTIVE LOG: 01 AUG 2012 12:04
<input checked="" type="checkbox"/> ACTIVE LOG: 14 NOV 2012 12:14
<input checked="" type="checkbox"/> ACTIVE LOG: 13 DEC 2012 09:09
<input checked="" type="checkbox"/> ACTIVE LOG: 23 APR 2012 15:54
<input checked="" type="checkbox"/> ACTIVE LOG: 24 APR 2012 20:40
<input checked="" type="checkbox"/> ACTIVE LOG: 25 APR 2012 00:16
<input checked="" type="checkbox"/> ACTIVE LOG: 27 APR 2012 20:27
<input checked="" type="checkbox"/> ACTIVE LOG: 09 MAY 2012 18:59
<input checked="" type="checkbox"/> ACTIVE LOG: 11 MAY 2012 19:05
<input checked="" type="checkbox"/> ACTIVE LOG: 18 MAY 2012 20:08
<input checked="" type="checkbox"/> ACTIVE LOG: 22 MAY 2012 28:09
<input checked="" type="checkbox"/> ACTIVE LOG: 24 MAY 2012 28:13
<input checked="" type="checkbox"/> ACTIVE LOG: 27 MAY 2012 14:37
<input checked="" type="checkbox"/> ACTIVE LOG: 01 JUN 2012 :8:35
<input checked="" type="checkbox"/> ACTIVE LOG: 02 JUN 2012 :8:41
<input checked="" type="checkbox"/> ACTIVE LOG: 13 JUN 2012 :0:06
<input checked="" type="checkbox"/> ACTIVE LOG: 13 JUN 2012 :1:37
<input checked="" type="checkbox"/> ACTIVE LOG: 16 JUN 2012 :5:54
<input checked="" type="checkbox"/> ACTIVE LOG: 16 JUN 2012 :6:45
<input checked="" type="checkbox"/> ACTIVE LOG: 16 JUN 2012 :9:05
<input checked="" type="checkbox"/> ACTIVE LOG: 16 JUN 2012 :9:25
<input checked="" type="checkbox"/> ACTIVE LOG: 30 JUN 2012 07:07
<input checked="" type="checkbox"/> ACTIVE LOG: 30 JUN 2012 09:29
<input checked="" type="checkbox"/> ACTIVE LOG: 28 JUL 2012 13:22
<input checked="" type="checkbox"/> ACTIVE LOG: 28 JUL 2012 13:28
<input checked="" type="checkbox"/> ACTIVE LOG: 01 AUG 2012 12:04
<input checked="" type="checkbox"/> ACTIVE LOG: 14 NOV 2012 12:14
<input checked="" type="checkbox"/> ACTIVE LOG: 13 DEC 2012 09:09

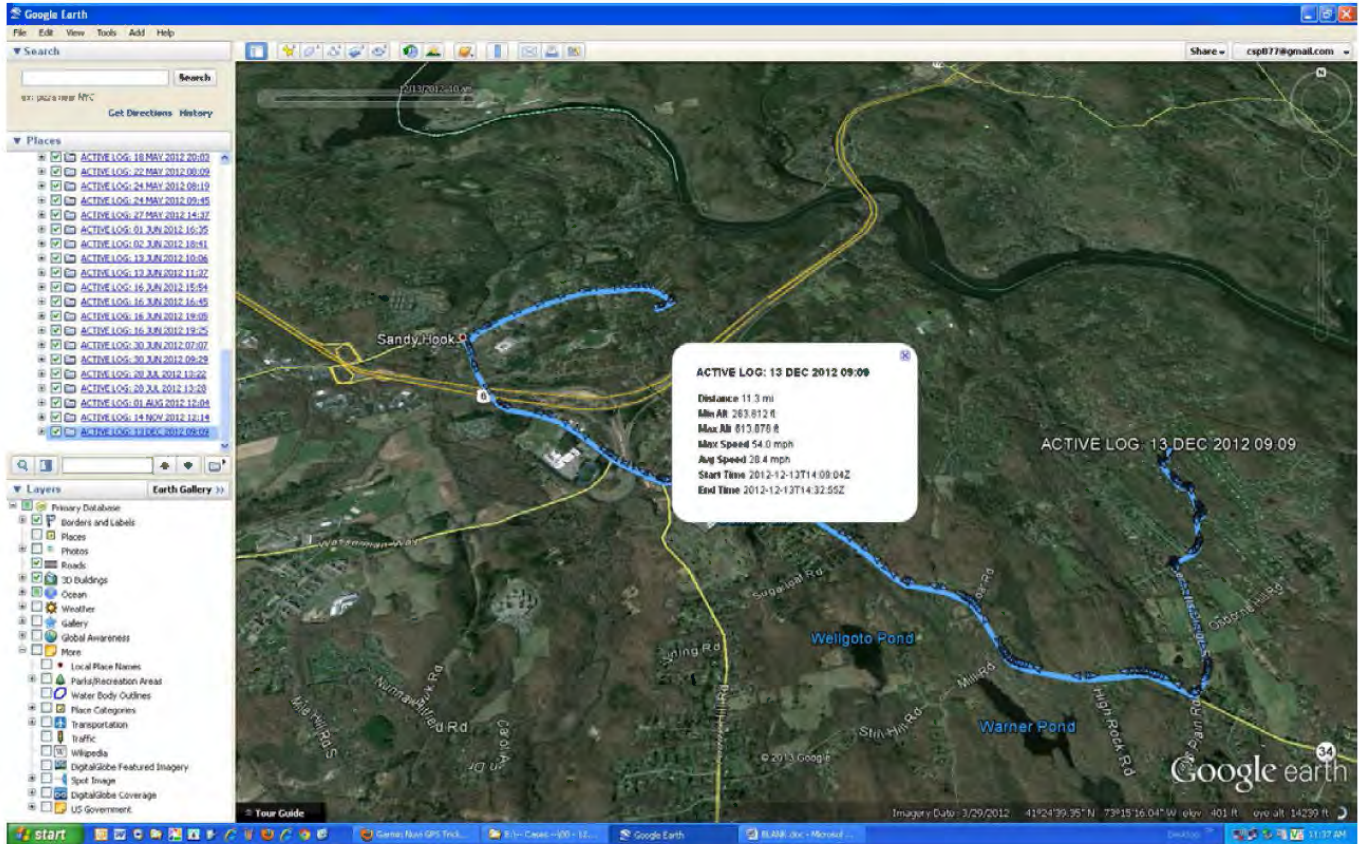




**CONNECTICUT STATE POLICE**  
**WESTERN DISTRICT MAJOR CRIME SQUAD**  
*CFS # 12-00 704 559      Sandy Hook Elementary School*

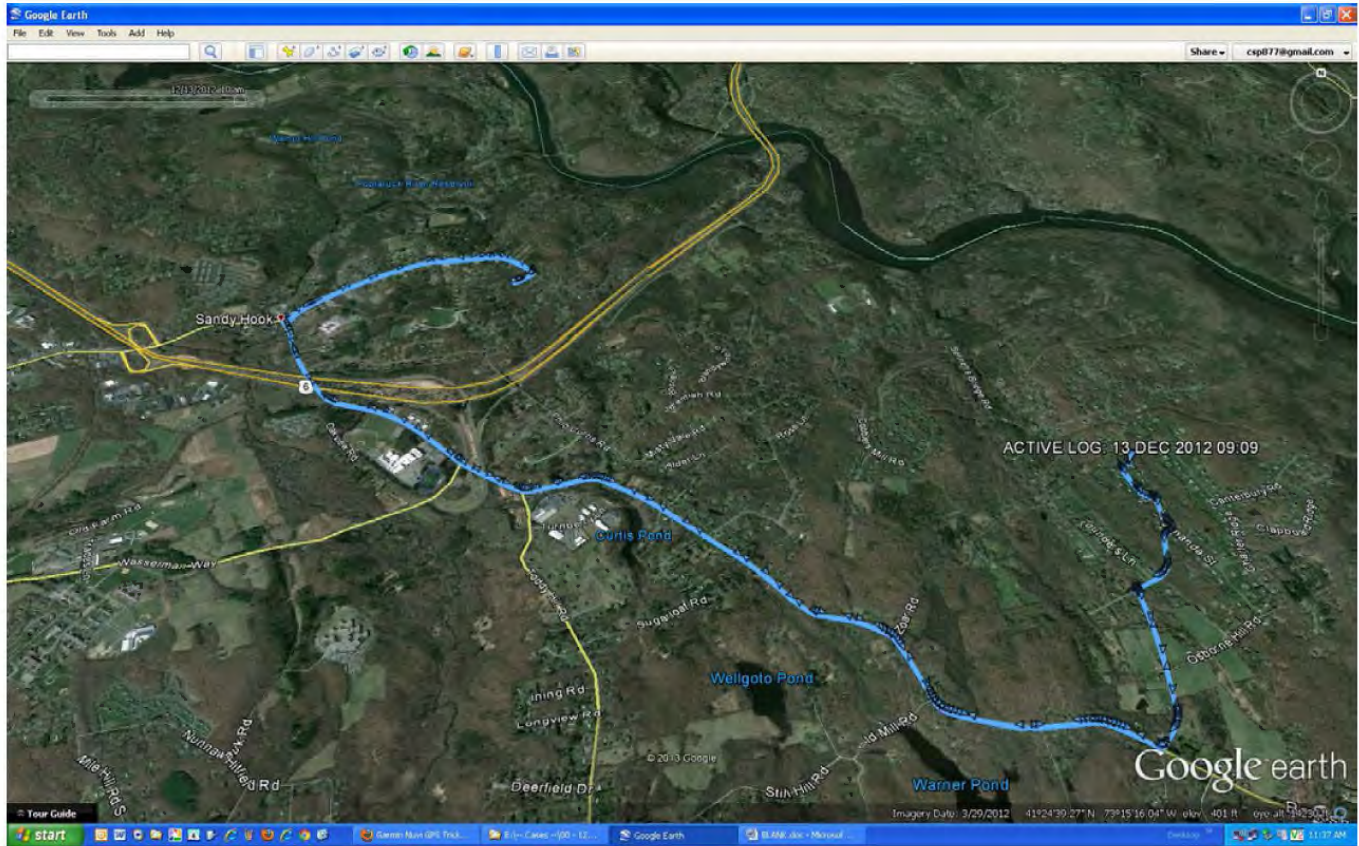


13 DEC 2012 0909 EST





**CONNECTICUT STATE POLICE**  
**WESTERN DISTRICT MAJOR CRIME SQUAD**  
*CFS # 12-00 704 559      Sandy Hook Elementary School*



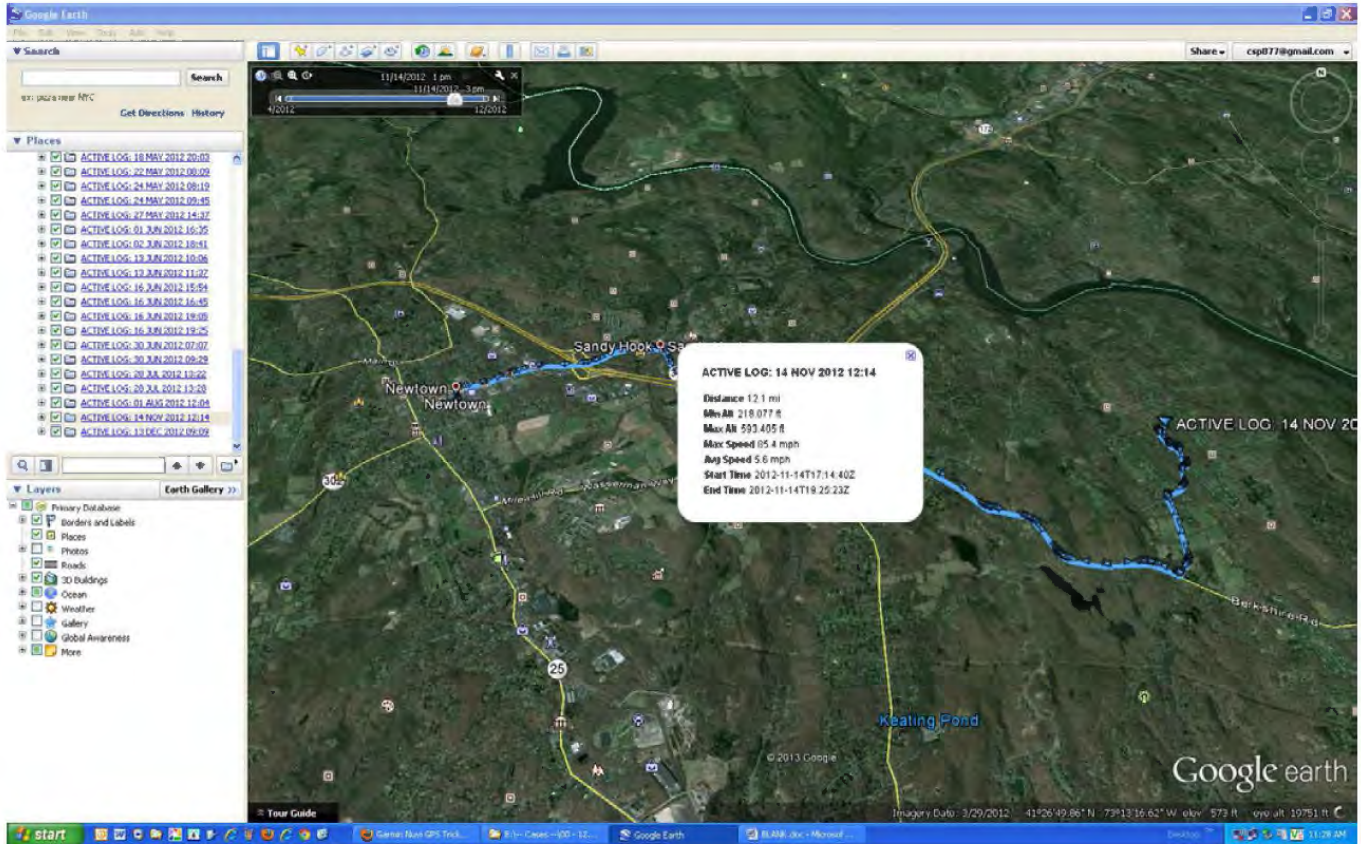




**CONNECTICUT STATE POLICE**  
**WESTERN DISTRICT MAJOR CRIME SQUAD**  
*CFS # 12-00 704 559      Sandy Hook Elementary School*



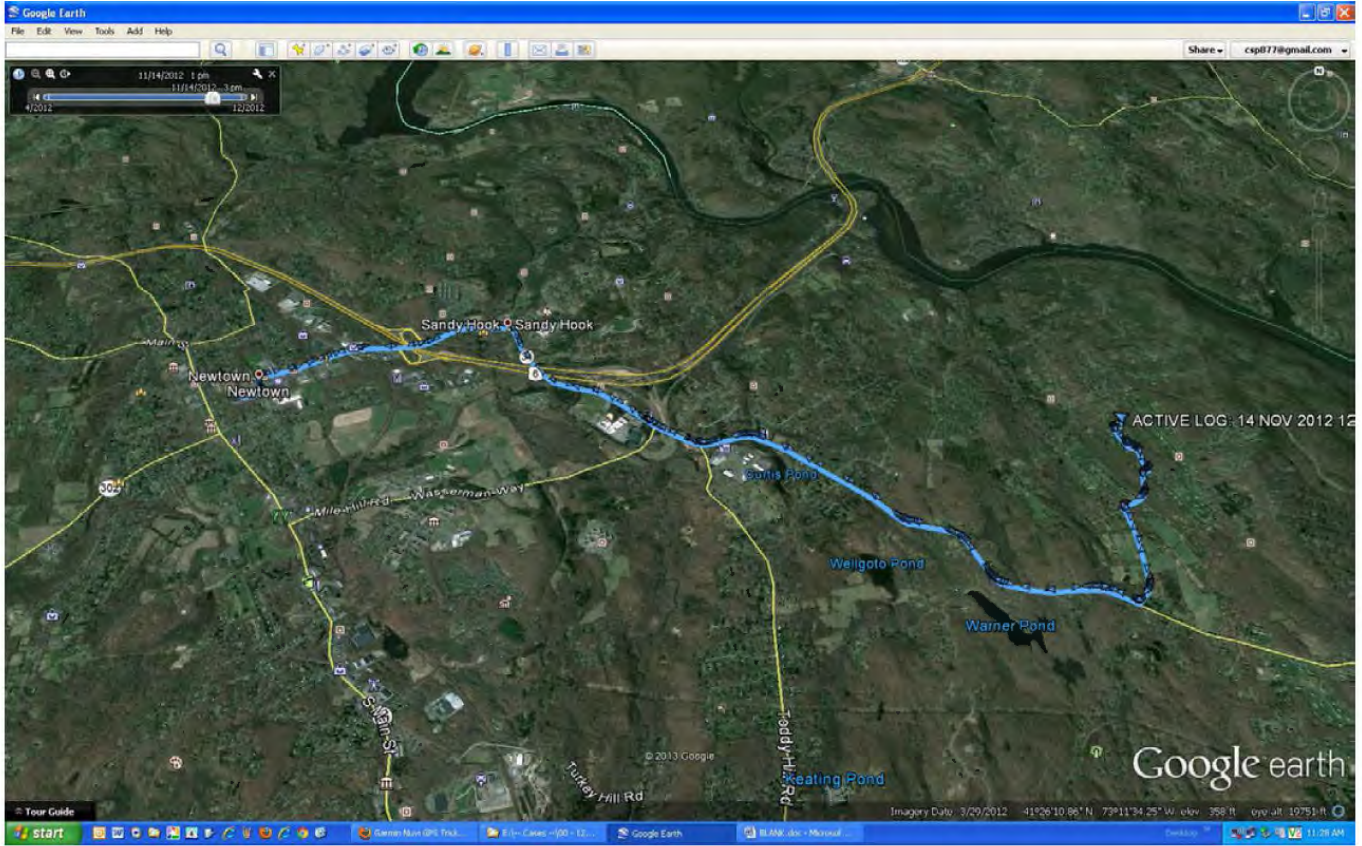
14 NOV 2012 1214 EST







**CONNECTICUT STATE POLICE**  
**WESTERN DISTRICT MAJOR CRIME SQUAD**  
*CFS # 12-00 704 559      Sandy Hook Elementary School*

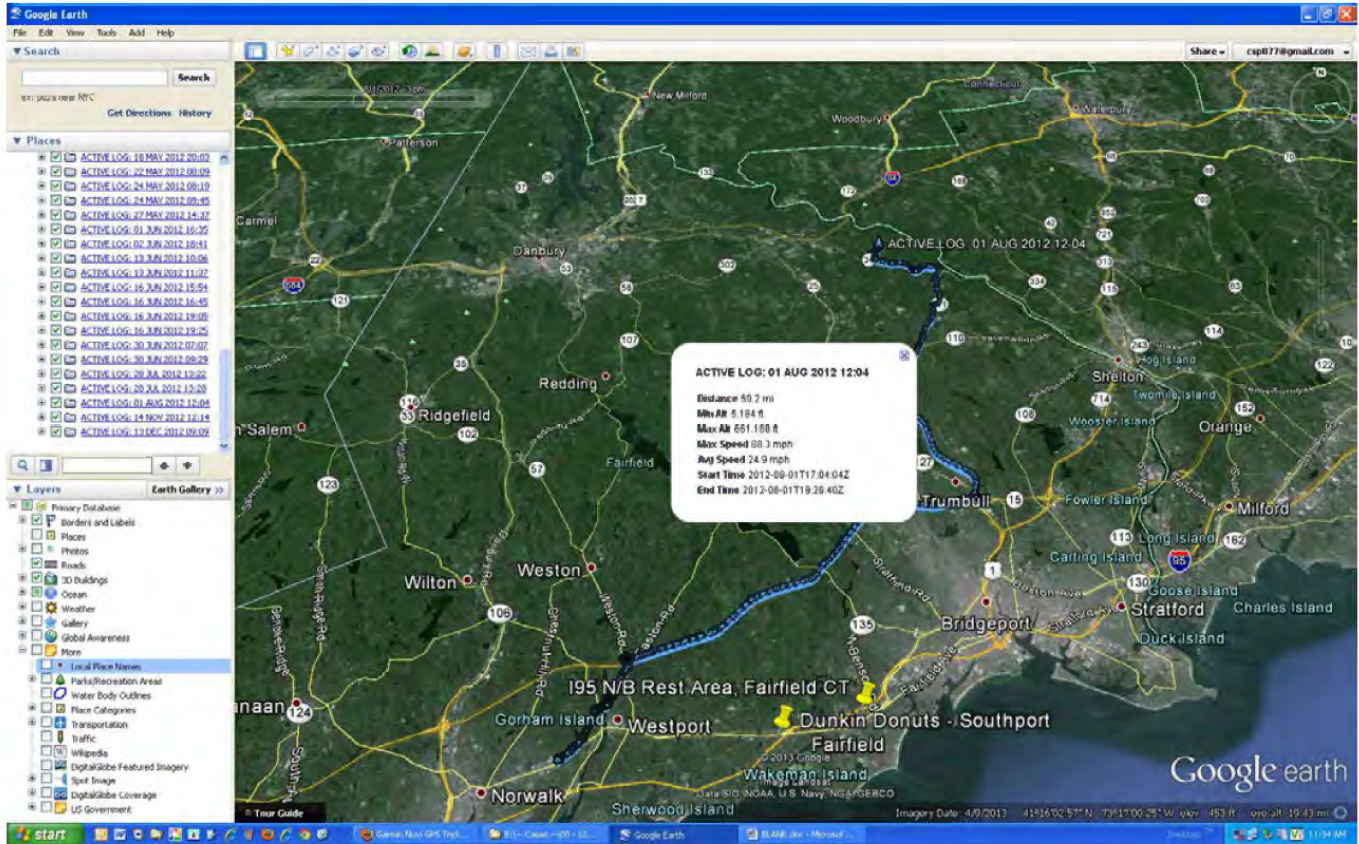




**CONNECTICUT STATE POLICE**  
**WESTERN DISTRICT MAJOR CRIME SQUAD**  
CFS # 12-00 704 559      Sandy Hook Elementary School



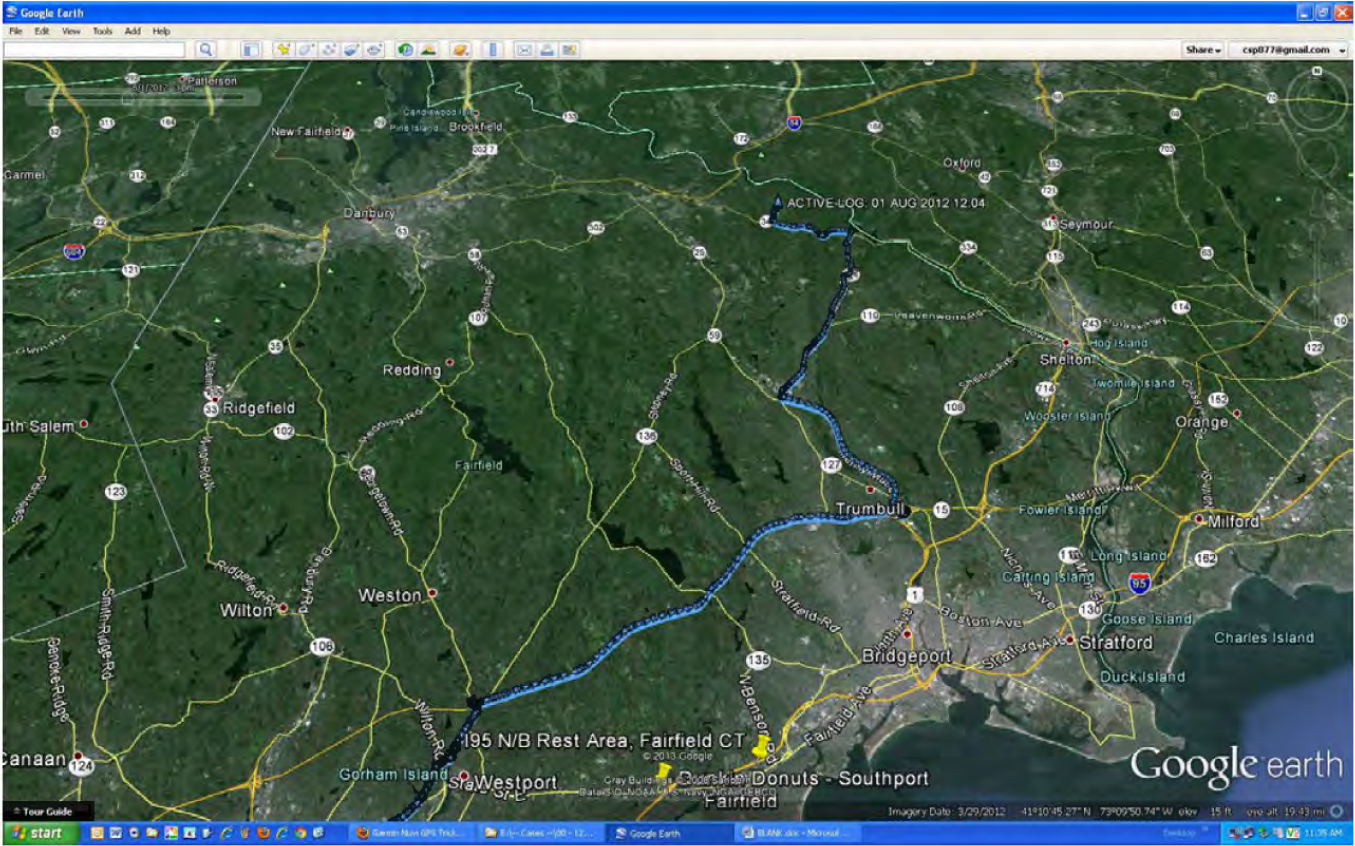
01 AUG 2012 1204 EST







**CONNECTICUT STATE POLICE**  
**WESTERN DISTRICT MAJOR CRIME SQUAD**  
*CFS # 12-00 704 559*      *Sandy Hook Elementary School*



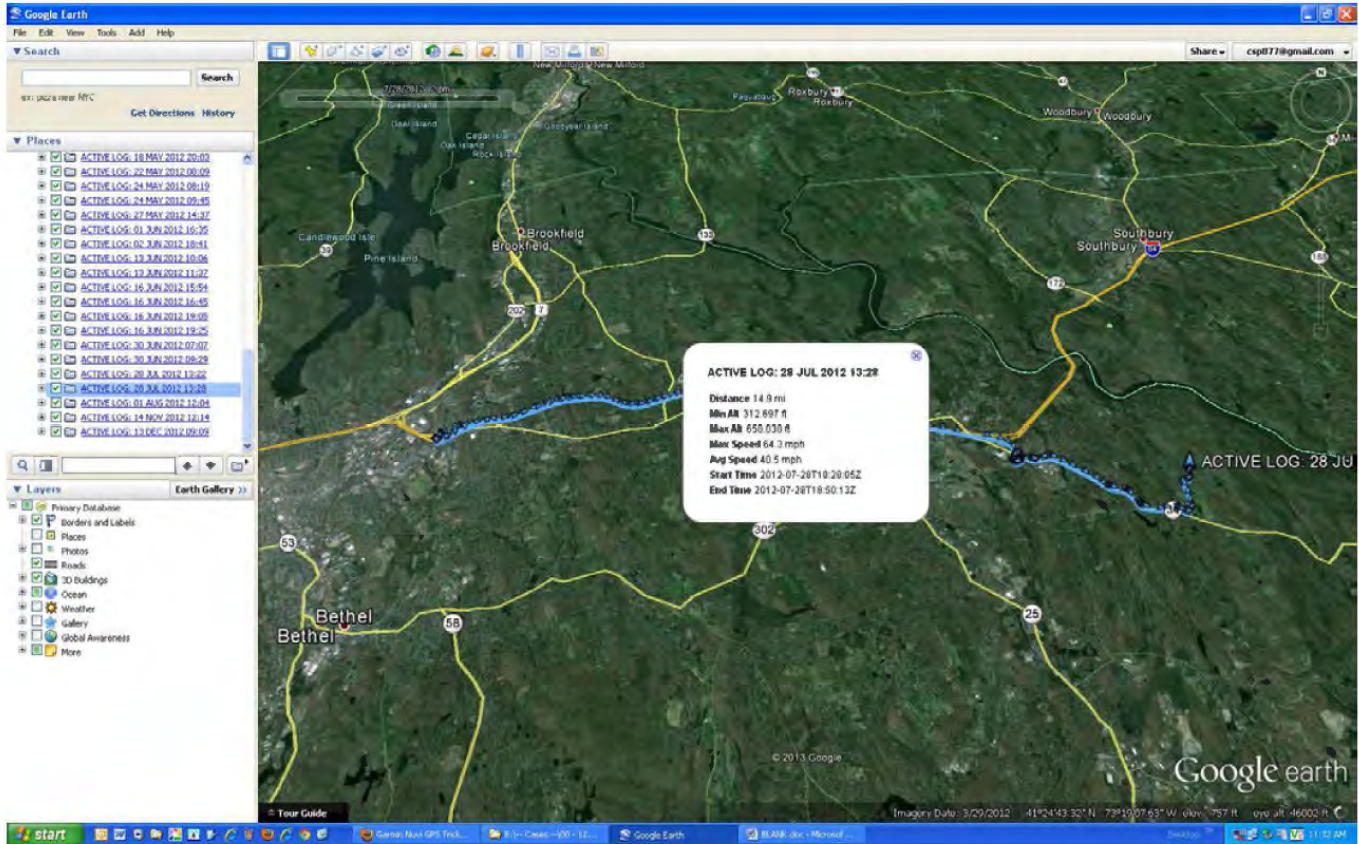
**Detective John Kimball**  
**WDMCS Troop G**



**CONNECTICUT STATE POLICE**  
**WESTERN DISTRICT MAJOR CRIME SQUAD**  
*CFS # 12-00 704 559      Sandy Hook Elementary School*



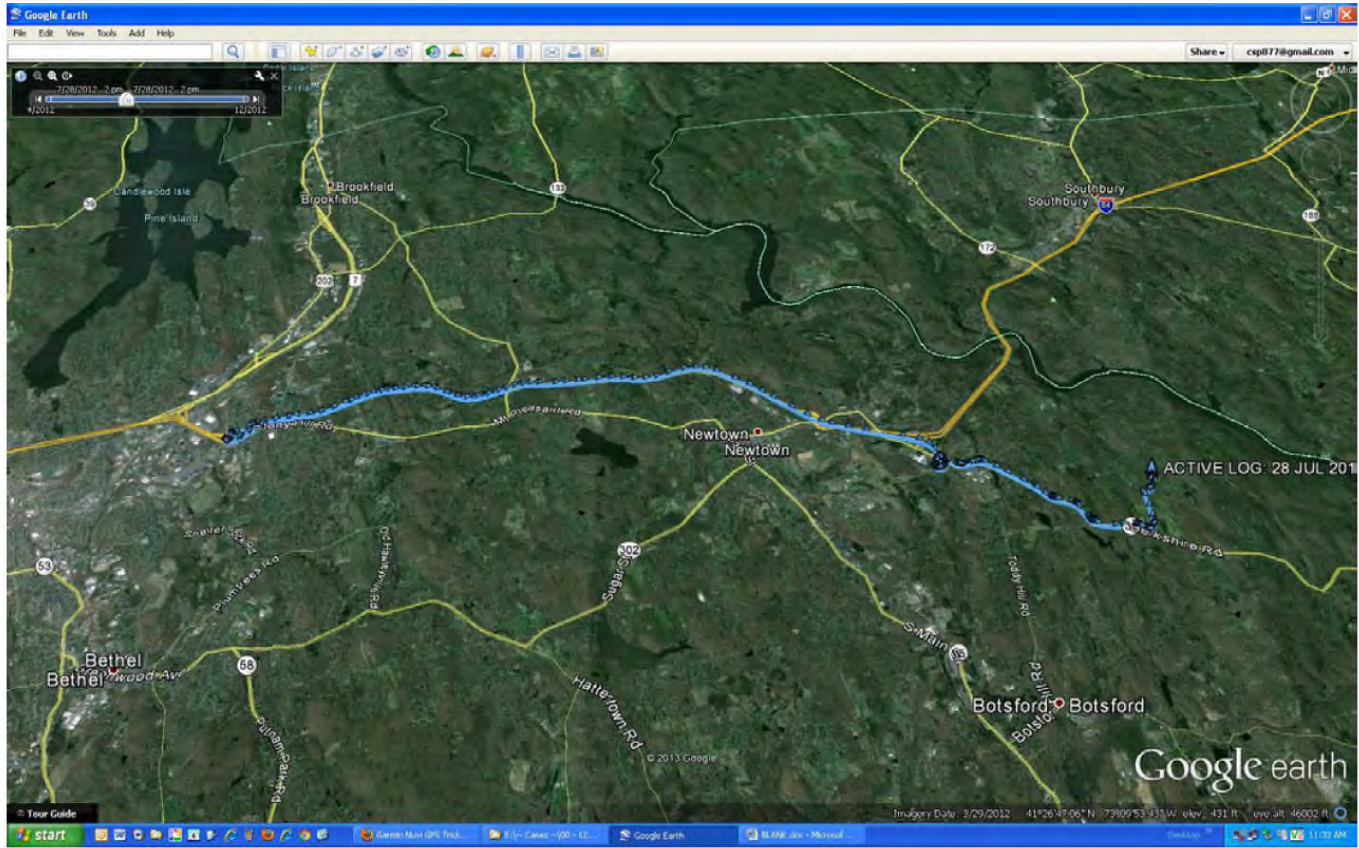
28 JUL 2012 1328 EST







**CONNECTICUT STATE POLICE**  
**WESTERN DISTRICT MAJOR CRIME SQUAD**  
*CFS # 12-00 704 559      Sandy Hook Elementary School*



**Detective John Kimball**  
**WDMCS Troop G**



**CONNECTICUT STATE POLICE**  
**WESTERN DISTRICT MAJOR CRIME SQUAD**  
*CFS # 12-00 704 559      Sandy Hook Elementary School*



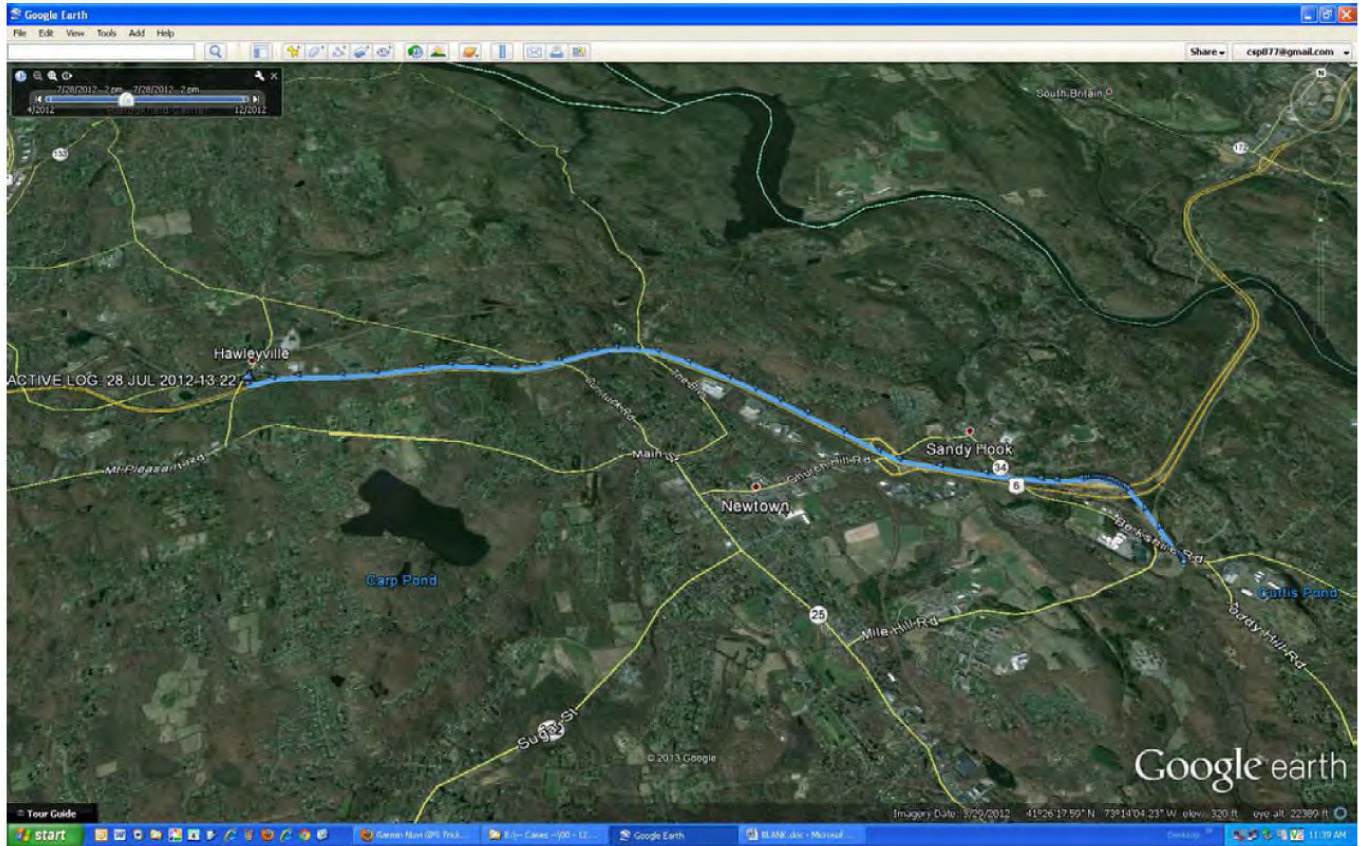
28 JUL 2012 1322 EST

**ACTIVE LOG: 28 JUL 2012 13:22**  
Distance: 5.3 mi  
Min Alt: 287.467 ft  
Max Alt: 577.825 ft  
Max Speed: 87.0 mph  
Avg Speed: 56.6 mph  
Start Time: 2012-07-28T16:22:24Z  
End Time: 2012-07-28T18:28:00Z





**CONNECTICUT STATE POLICE**  
**WESTERN DISTRICT MAJOR CRIME SQUAD**  
*CFS # 12-00 704 559      Sandy Hook Elementary School*

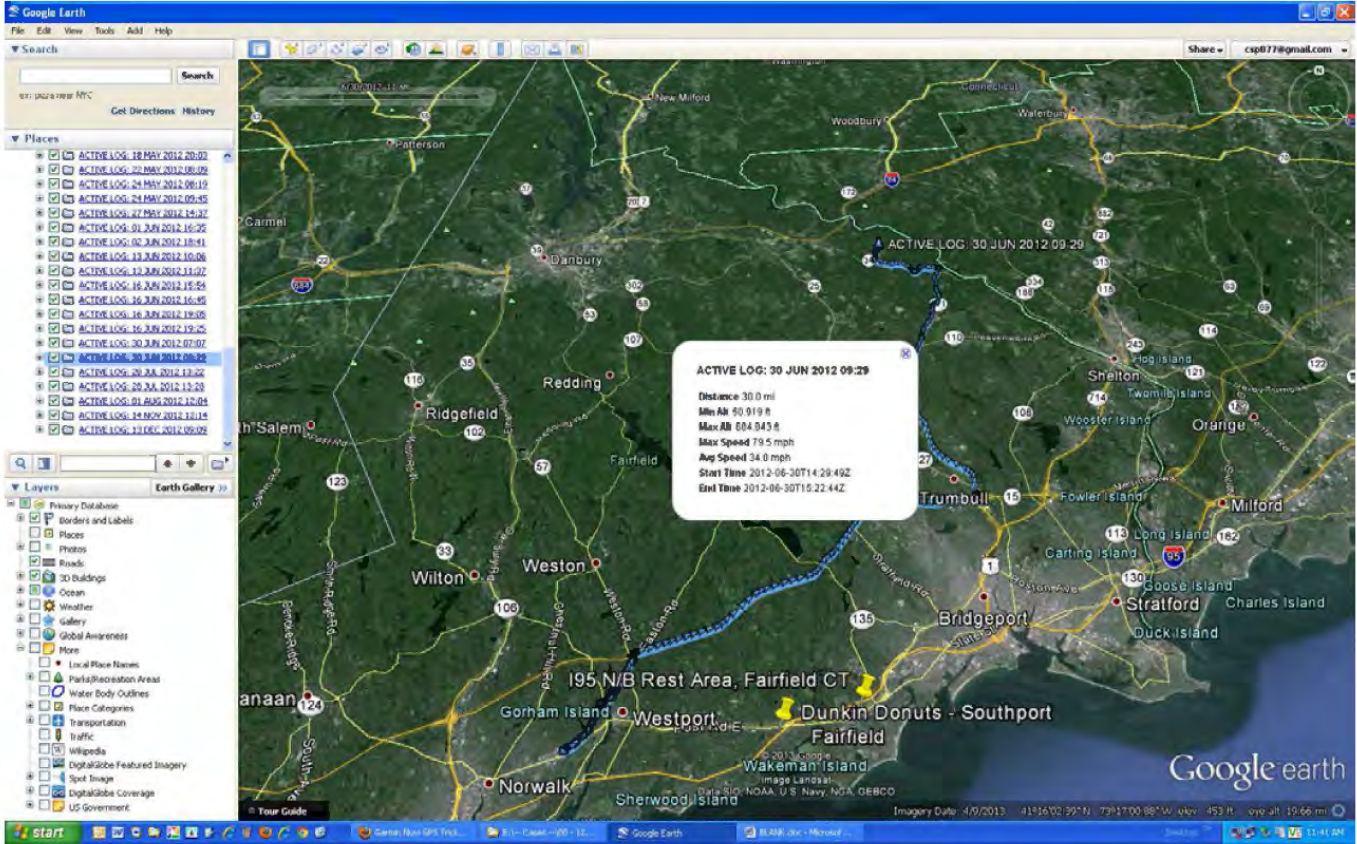




**CONNECTICUT STATE POLICE**  
**WESTERN DISTRICT MAJOR CRIME SQUAD**  
*CFS # 12-00 704 559 Sandy Hook Elementary School*



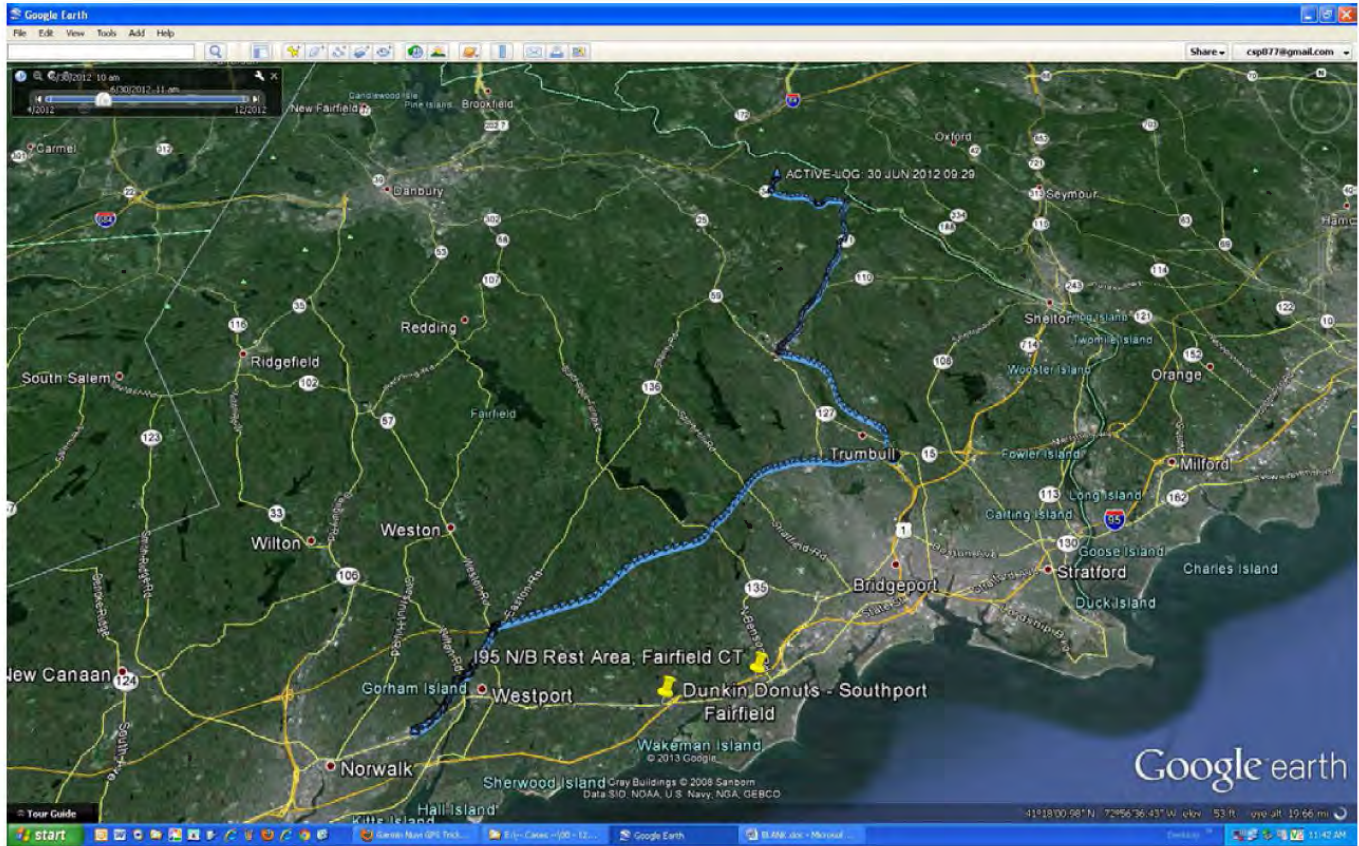
30 JUN 2012 0929 EST







**CONNECTICUT STATE POLICE**  
**WESTERN DISTRICT MAJOR CRIME SQUAD**  
*CFS # 12-00 704 559*      *Sandy Hook Elementary School*

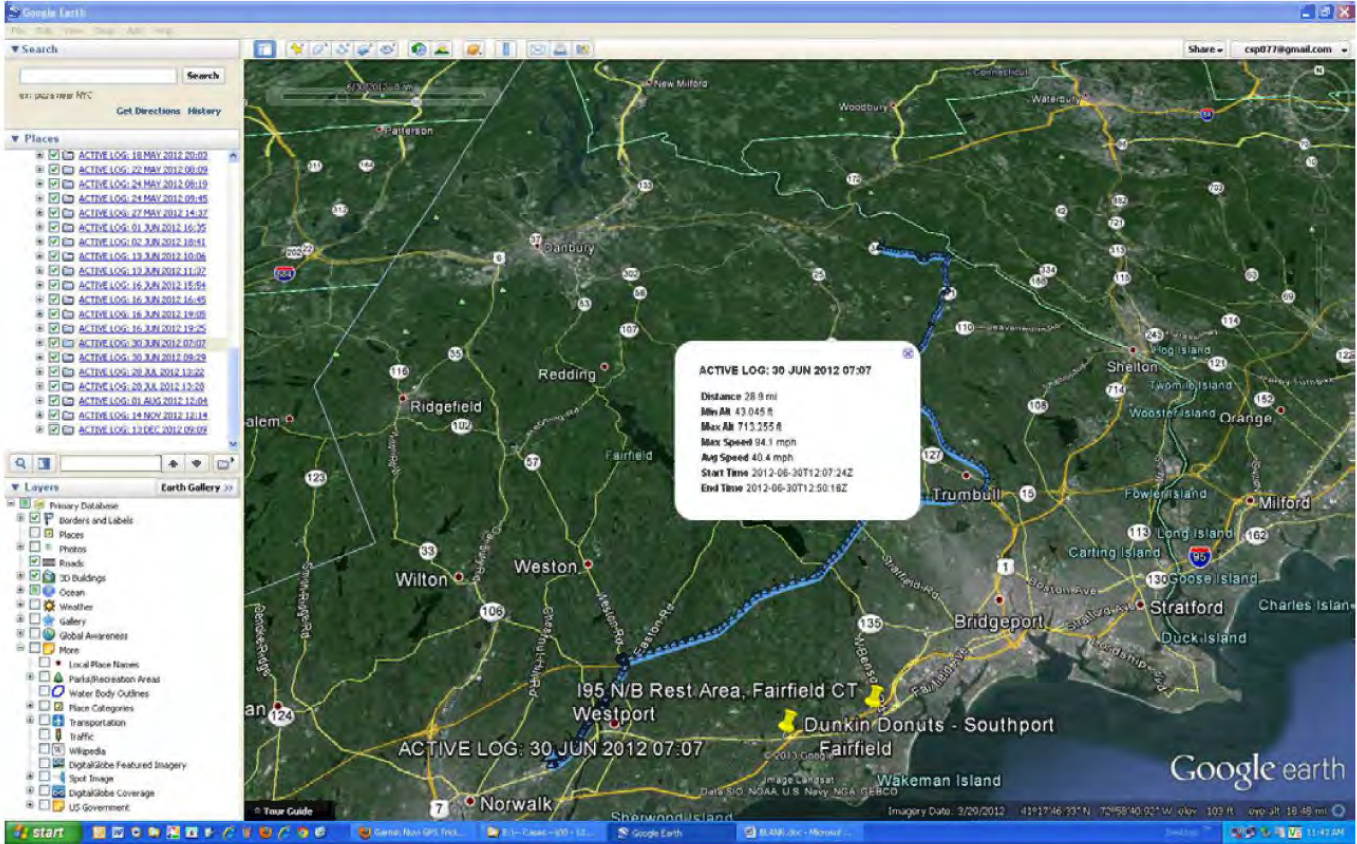




**CONNECTICUT STATE POLICE**  
**WESTERN DISTRICT MAJOR CRIME SQUAD**  
CFS # 12-00 704 559      *Sandy Hook Elementary School*



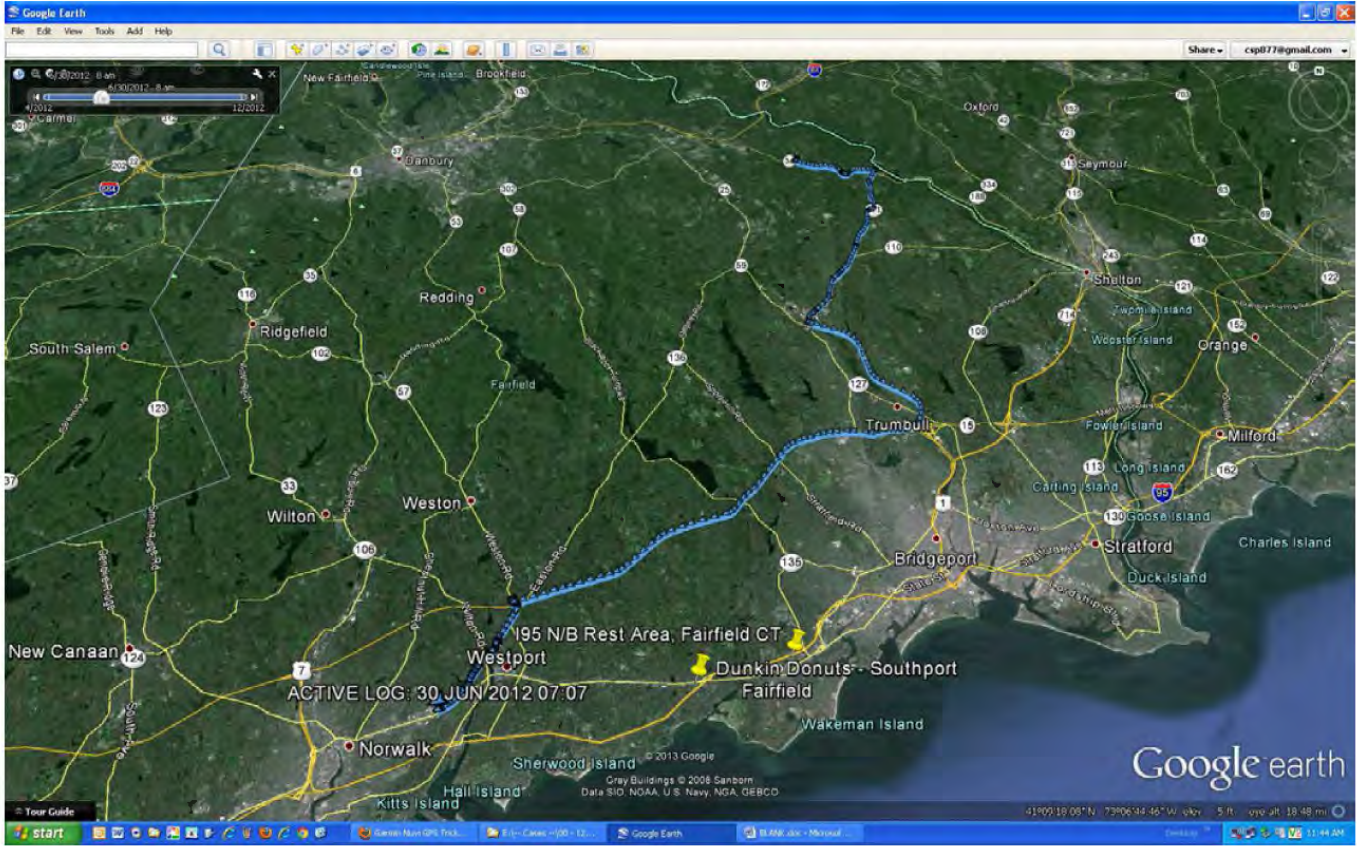
30 JUN 2012 0707 EST







**CONNECTICUT STATE POLICE**  
**WESTERN DISTRICT MAJOR CRIME SQUAD**  
**CFS # 12-00 704 559**      *Sandy Hook Elementary School*



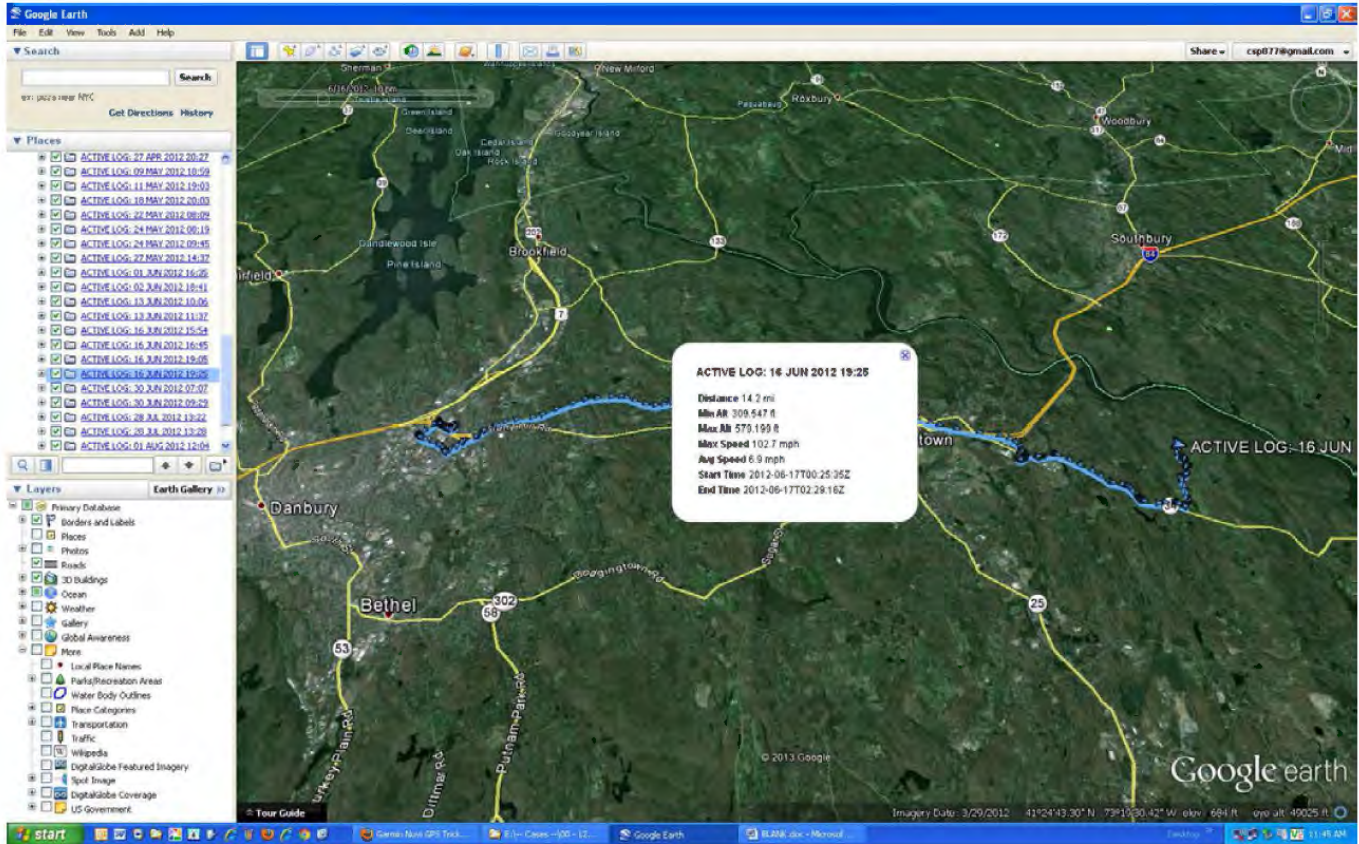
**Detective John Kimball**  
**WDMCS Troop G**



**CONNECTICUT STATE POLICE**  
**WESTERN DISTRICT MAJOR CRIME SQUAD**  
*CFS # 12-00 704 559      Sandy Hook Elementary School*



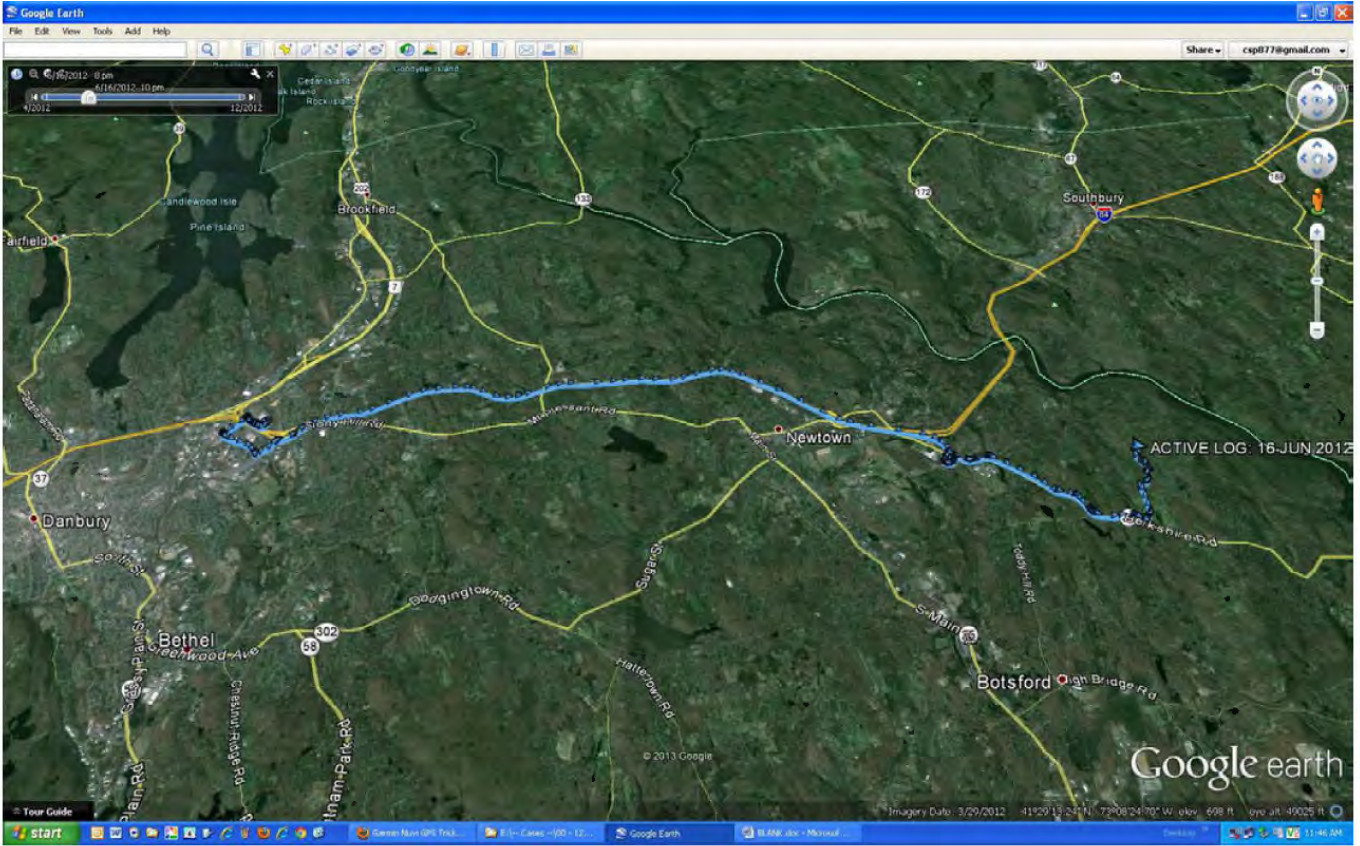
16 JUN 2012 1925 EST







**CONNECTICUT STATE POLICE**  
**WESTERN DISTRICT MAJOR CRIME SQUAD**  
*CFS # 12-00 704 559      Sandy Hook Elementary School*

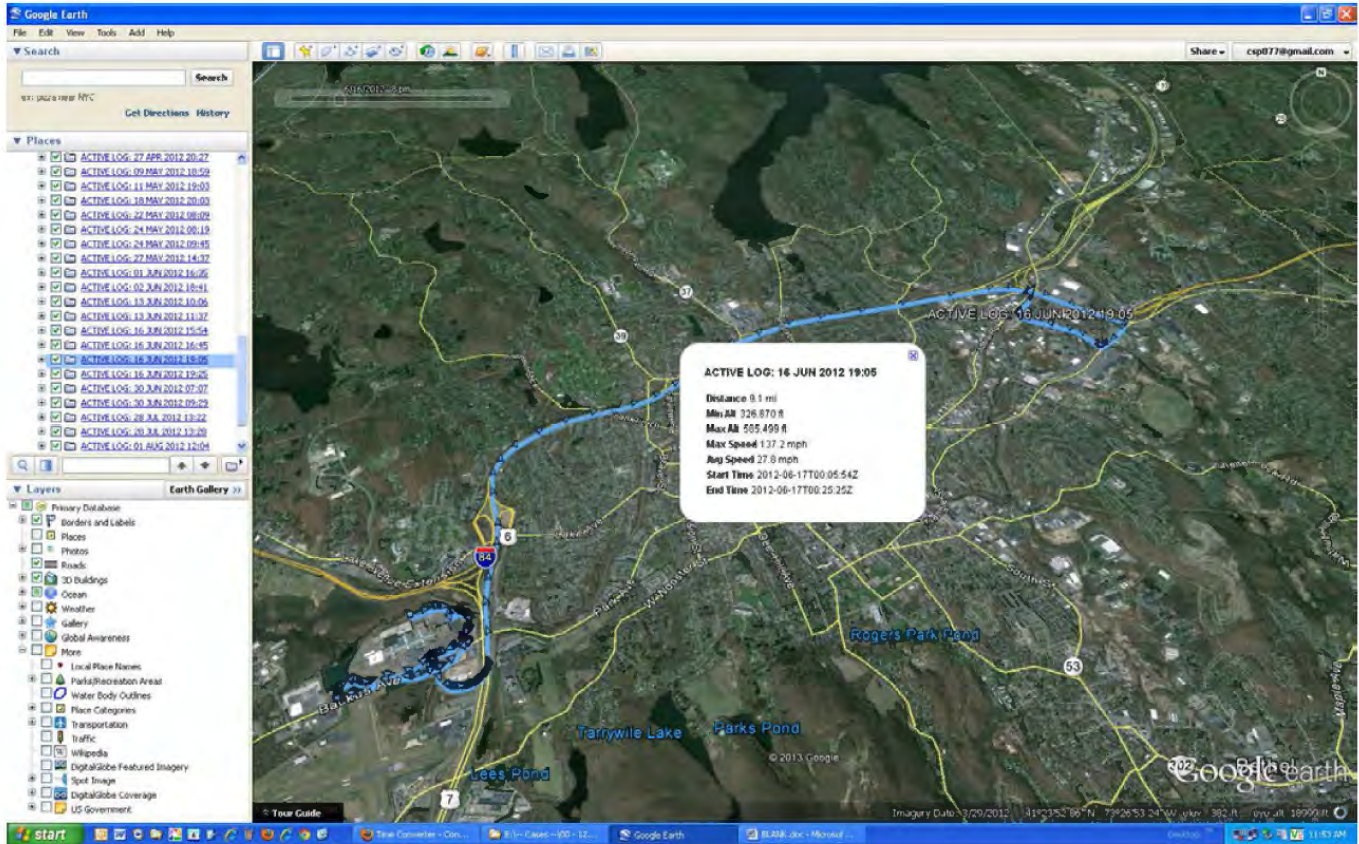




**CONNECTICUT STATE POLICE**  
**WESTERN DISTRICT MAJOR CRIME SQUAD**  
*CFS # 12-00 704 559 Sandy Hook Elementary School*



16 JUN 2012 1905 EST

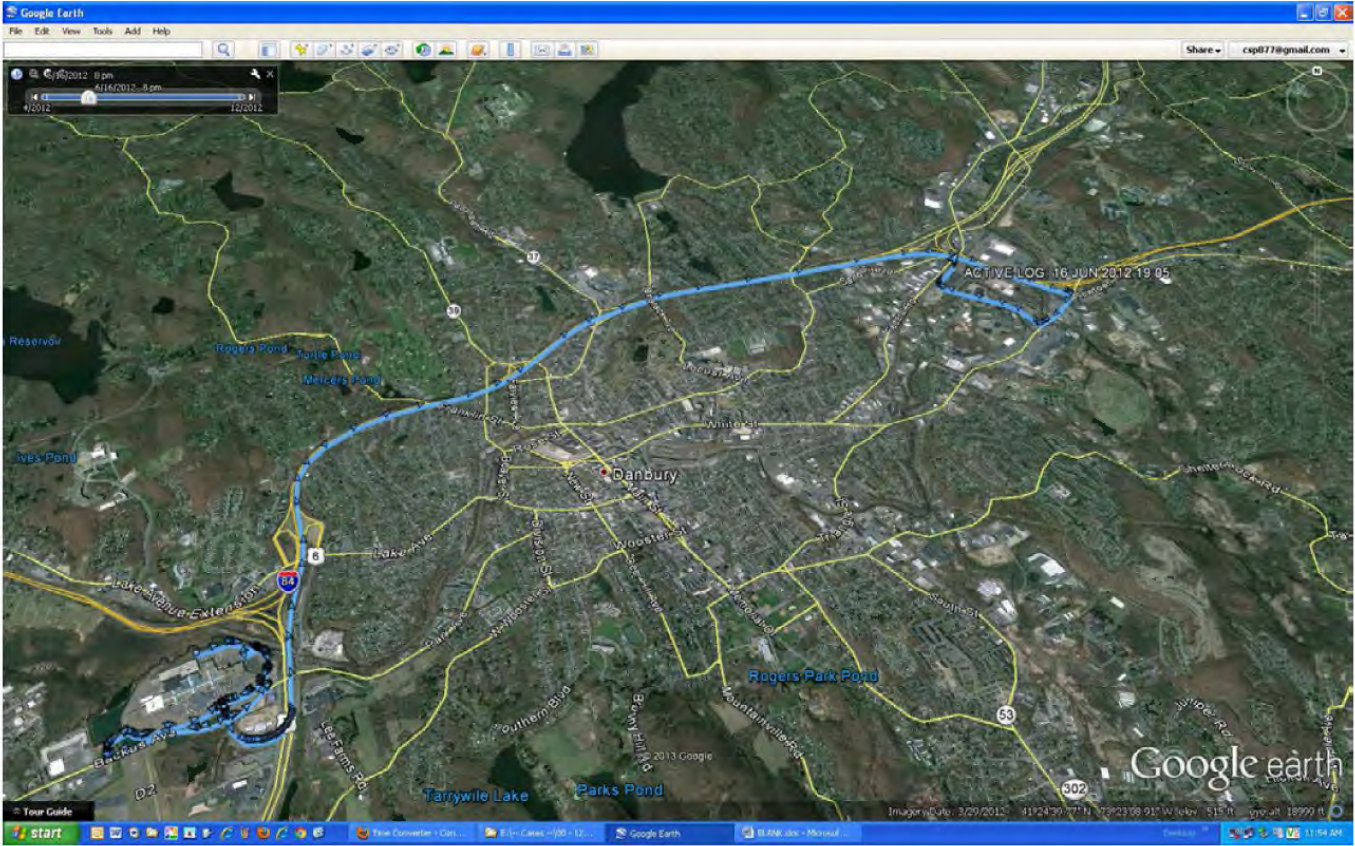


**Detective John Kimball**  
**WDMCS Troop G**





**CONNECTICUT STATE POLICE**  
**WESTERN DISTRICT MAJOR CRIME SQUAD**  
*CFS # 12-00 704 559      Sandy Hook Elementary School*



**Detective John Kimball**  
**WDMCS Troop G**



**CONNECTICUT STATE POLICE**  
**WESTERN DISTRICT MAJOR CRIME SQUAD**  
*CFS # 12-00 704 559      Sandy Hook Elementary School*



16 JUN 2012 1645 EST

The screenshot shows a Google Earth interface with a blue path overlaid on an aerial view of a school campus. A data popup window is open over the path, displaying the following information:

- ACTIVE LOG: 16 JUN 2012 16:45
- Distance: 1.1 mi
- Max Alt: 458.799 ft
- Max Alt: 517.604 ft
- Avg Speed: 127.5 mph
- Avg Speed: 15.8 mph
- Start Time: 2012-06-16T21:45:40Z
- End Time: 2012-06-16T21:49:41Z

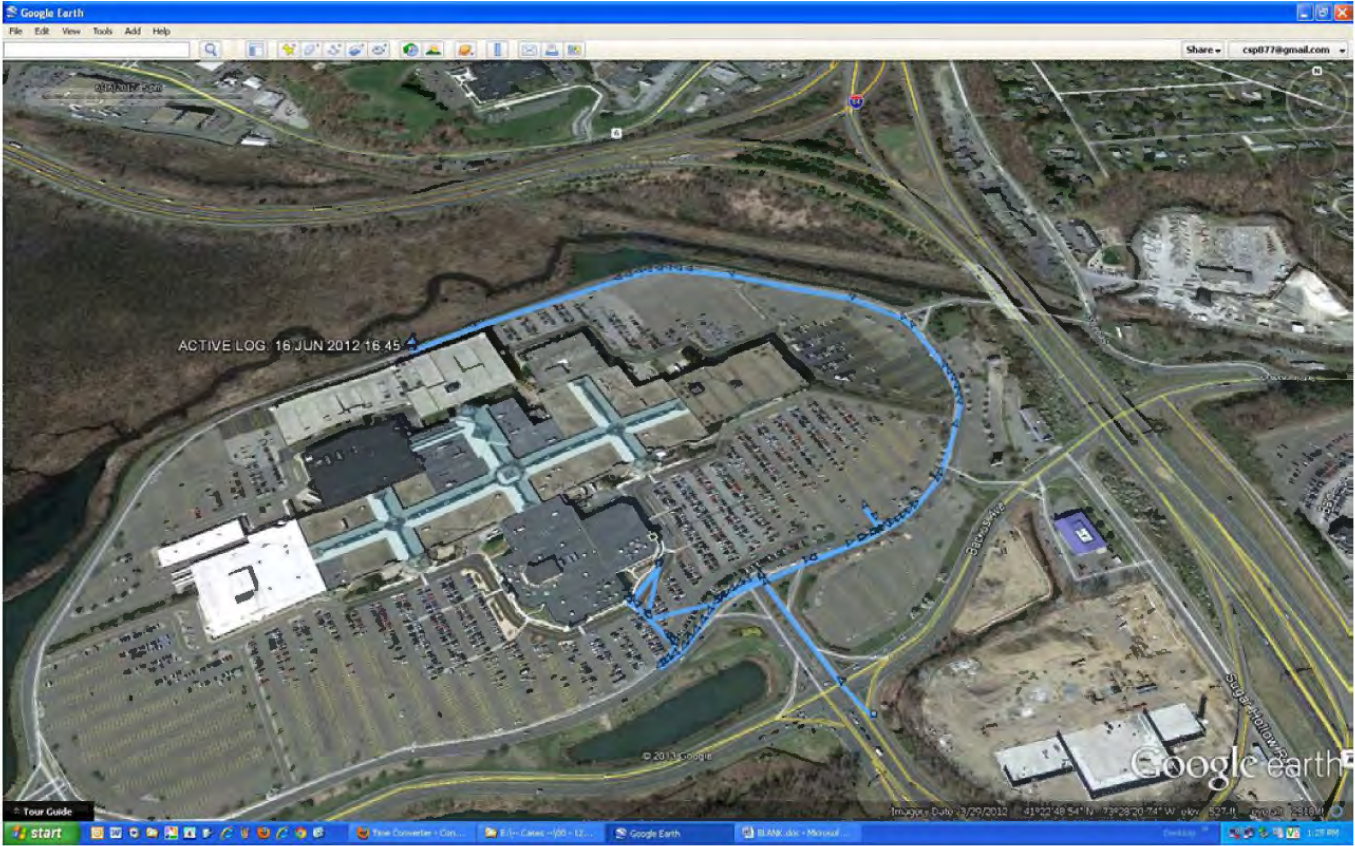
The left sidebar shows a list of 'Places' with various active log entries from April to August 2012. The 'Layers' panel is also visible, showing various map data layers like 'Primary Database', 'Borders and Labels', and '3D Buildings'.

**Detective John Kimball**  
**WDMCS Troop G**





**CONNECTICUT STATE POLICE**  
**WESTERN DISTRICT MAJOR CRIME SQUAD**  
*CFS # 12-00 704 559      Sandy Hook Elementary School*

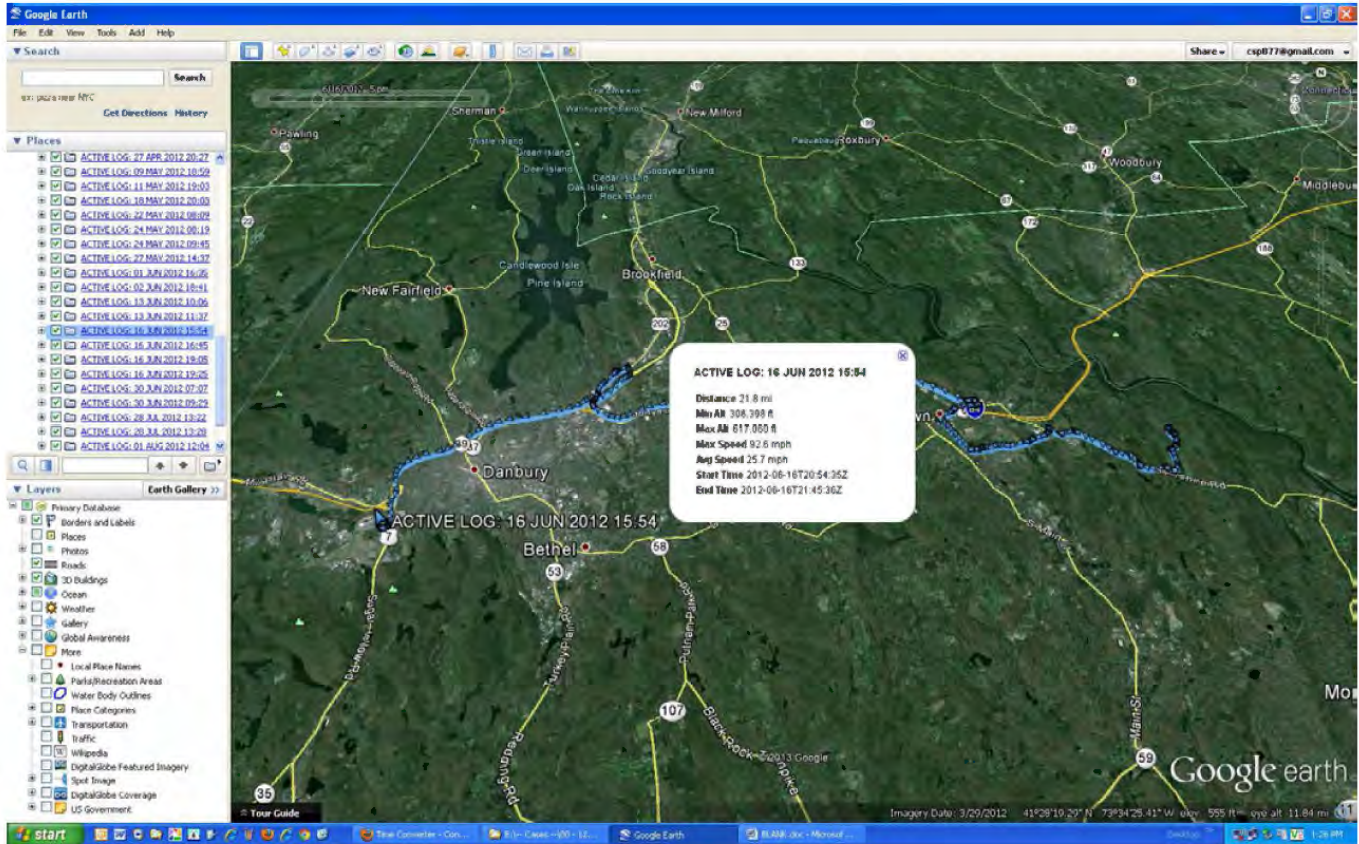




**CONNECTICUT STATE POLICE**  
**WESTERN DISTRICT MAJOR CRIME SQUAD**  
*CFS # 12-00 704 559 Sandy Hook Elementary School*



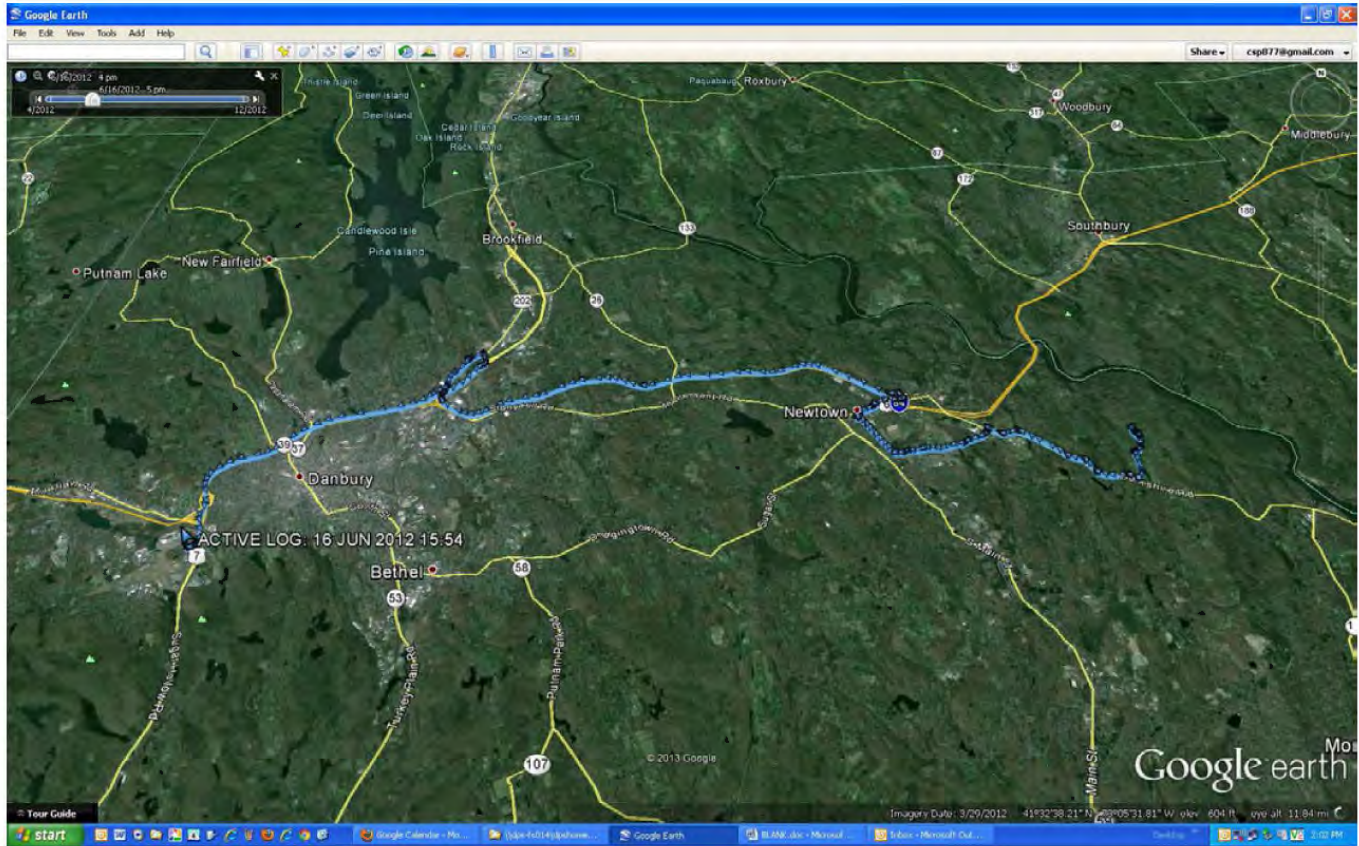
16 JUN 2012 1554 EST







**CONNECTICUT STATE POLICE**  
**WESTERN DISTRICT MAJOR CRIME SQUAD**  
*CFS # 12-00 704 559*      *Sandy Hook Elementary School*

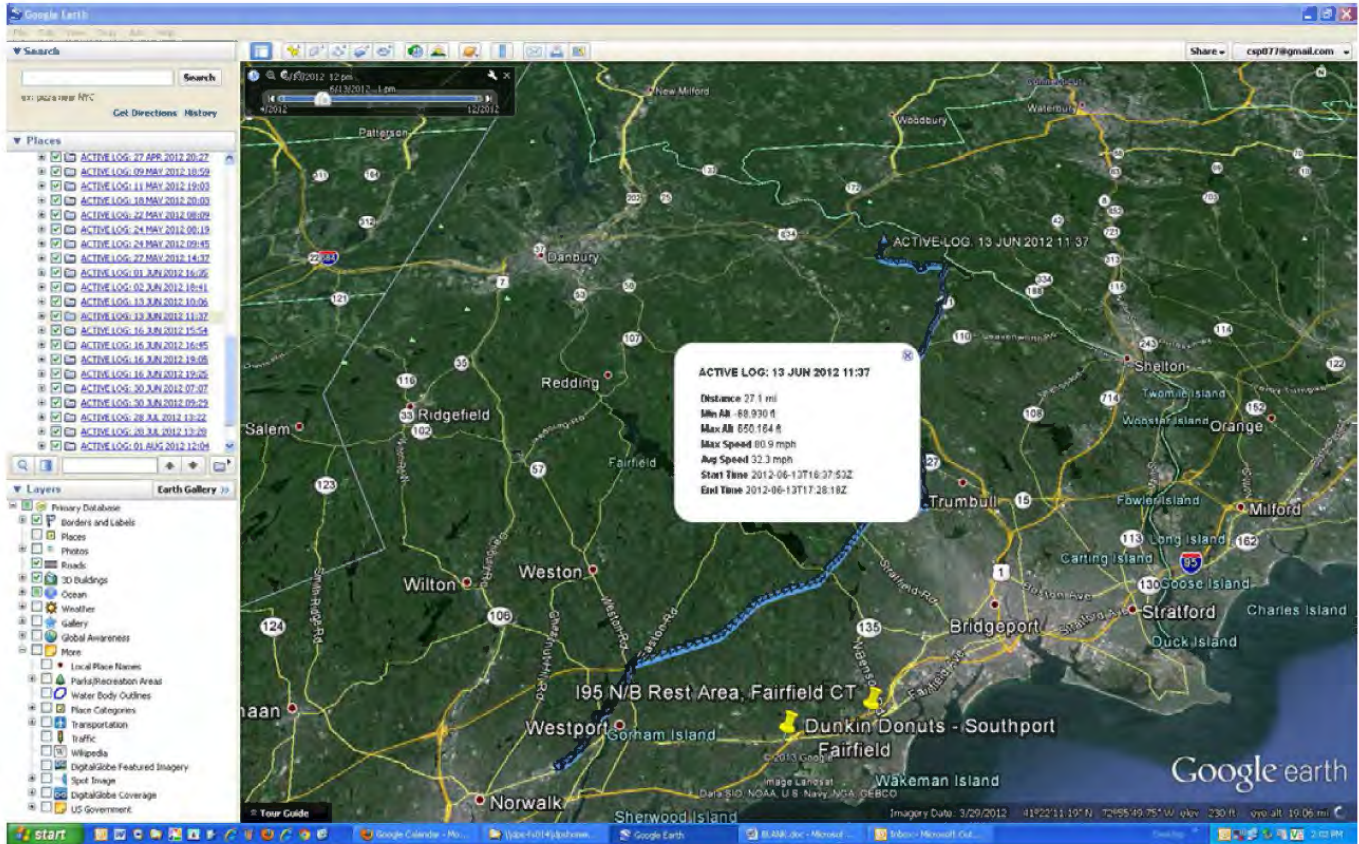




**CONNECTICUT STATE POLICE**  
**WESTERN DISTRICT MAJOR CRIME SQUAD**  
*CFS # 12-00 704 559      Sandy Hook Elementary School*



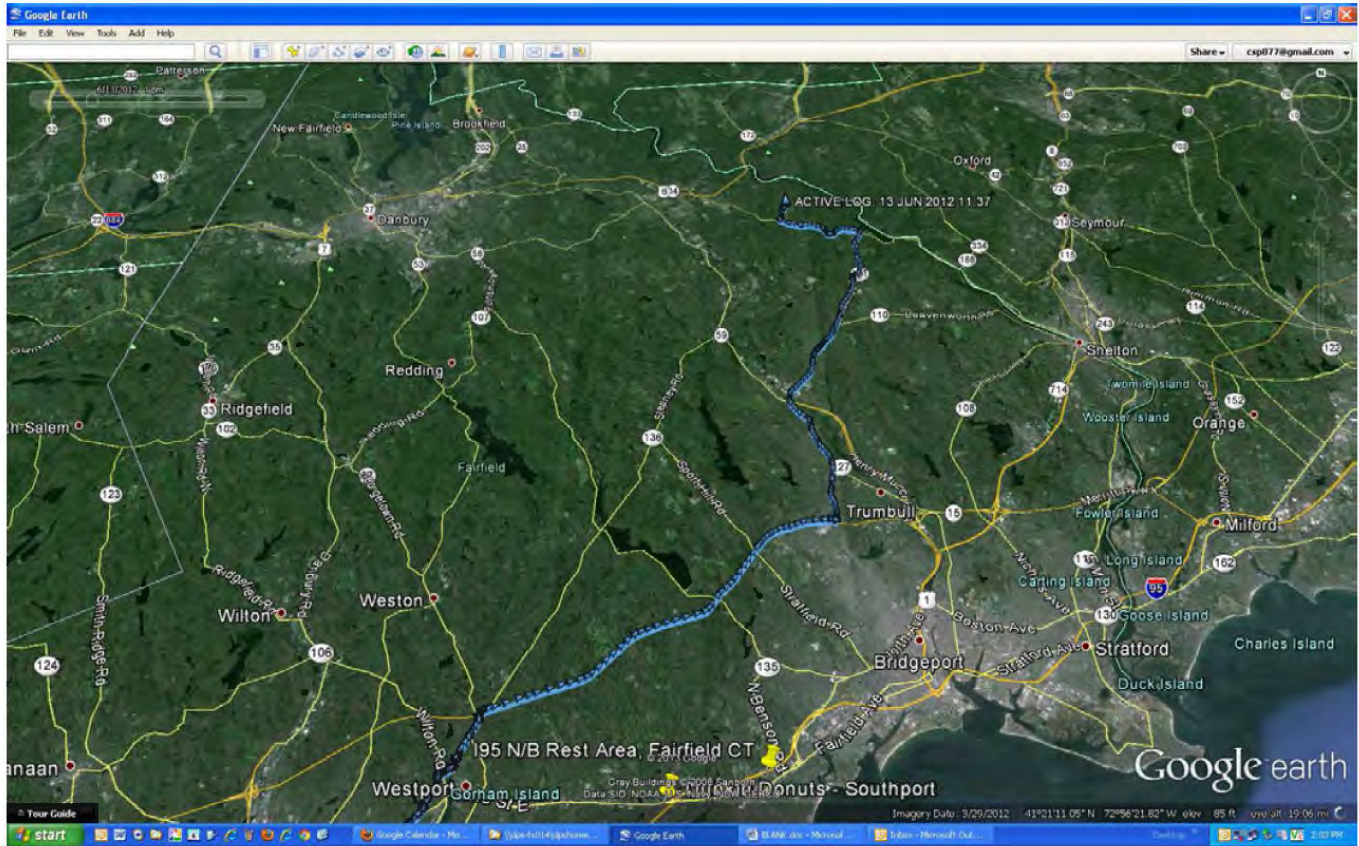
13 JUN 2012 1137 EST







**CONNECTICUT STATE POLICE**  
**WESTERN DISTRICT MAJOR CRIME SQUAD**  
*CFS # 12-00 704 559*      *Sandy Hook Elementary School*

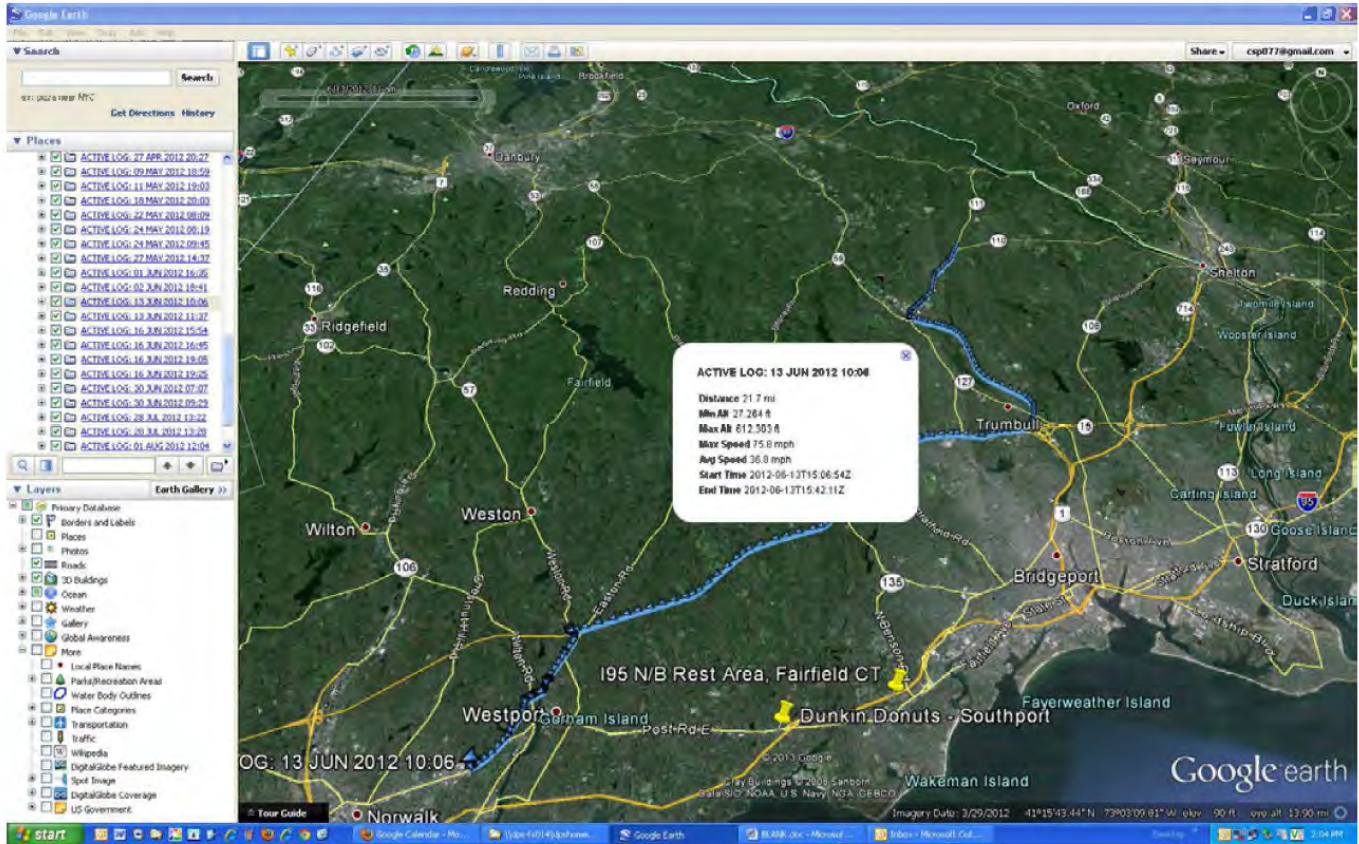




**CONNECTICUT STATE POLICE**  
**WESTERN DISTRICT MAJOR CRIME SQUAD**  
*CFS # 12-00 704 559      Sandy Hook Elementary School*



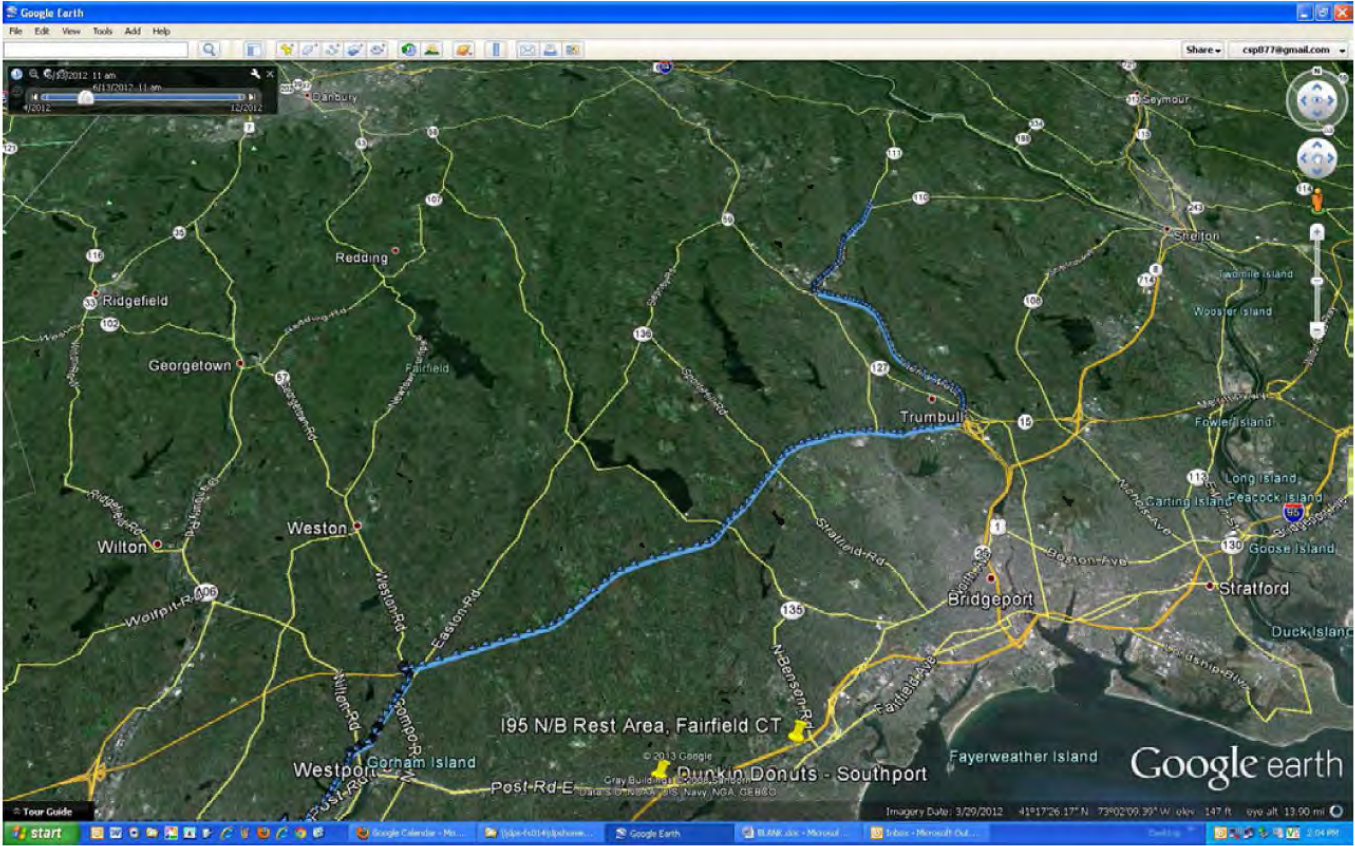
13 JUN 2012 1006 EST







**CONNECTICUT STATE POLICE**  
**WESTERN DISTRICT MAJOR CRIME SQUAD**  
*CFS # 12-00 704 559*      *Sandy Hook Elementary School*



**Detective John Kimball**  
**WDMCS Troop G**



**CONNECTICUT STATE POLICE**  
**WESTERN DISTRICT MAJOR CRIME SQUAD**  
*CFS # 12-00 704 559      Sandy Hook Elementary School*



02 JUN 2012 1841 EST

ACTIVE LOG: 02 JUN 2012 18:41

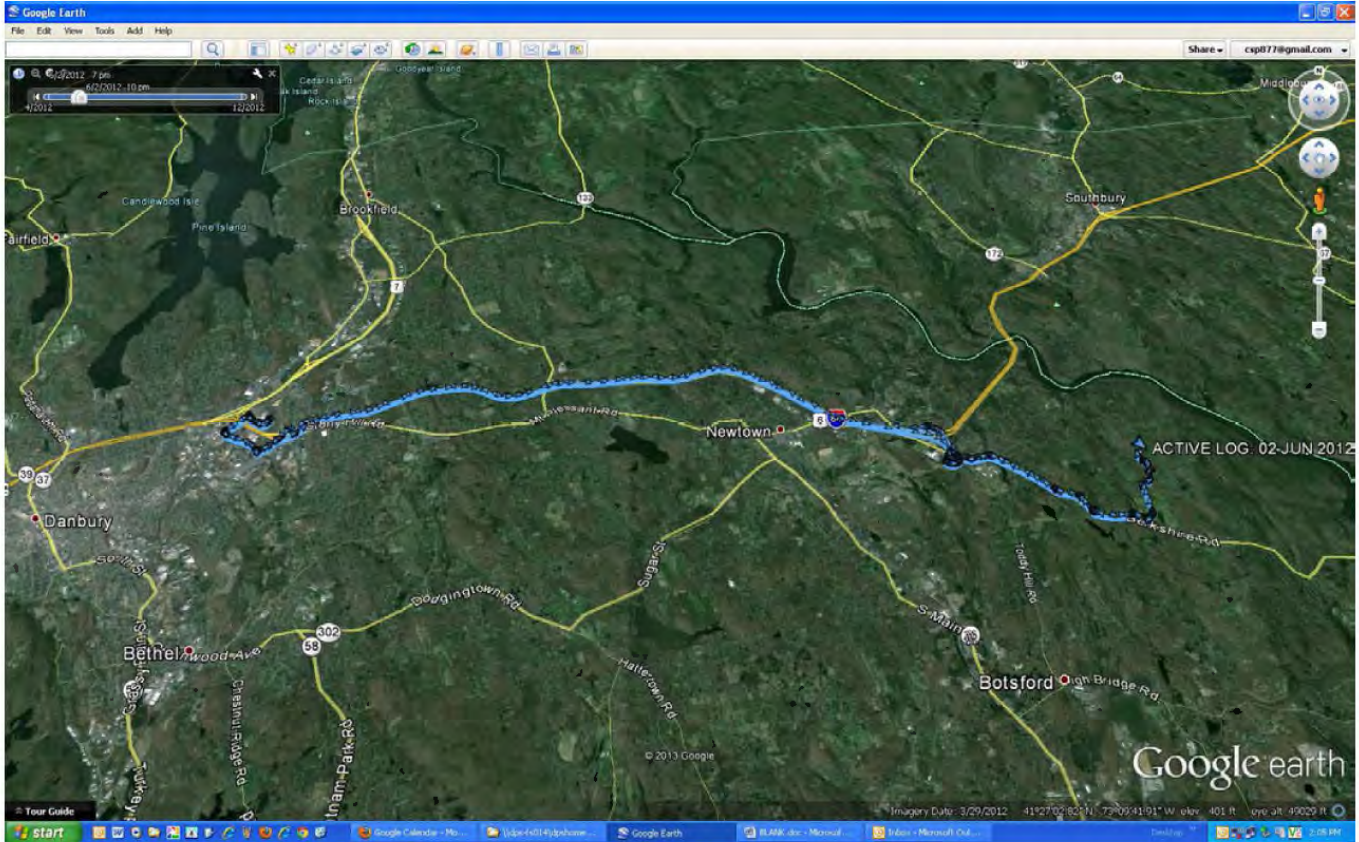
Distance 26.8 mi  
Max Alt 298.491 ft  
Max Alt 664.337 ft  
Avg Speed 107.5 mph  
Start Time 2012-06-02T23:41:06Z  
End Time 2012-06-03T02:05:48Z

ACTIVE LOG: 27 APR 2012 20:27  
ACTIVE LOG: 09 MAY 2012 18:59  
ACTIVE LOG: 11 MAY 2012 19:03  
ACTIVE LOG: 18 MAY 2012 20:03  
ACTIVE LOG: 22 MAY 2012 08:02  
ACTIVE LOG: 24 MAY 2012 06:19  
ACTIVE LOG: 29 MAY 2012 09:45  
ACTIVE LOG: 27 MAY 2012 14:37  
ACTIVE LOG: 01 JUN 2012 16:26  
ACTIVE LOG: 02 JUN 2012 18:41  
ACTIVE LOG: 13 JUN 2012 10:06  
ACTIVE LOG: 13 JUN 2012 11:37  
ACTIVE LOG: 16 JUN 2012 15:54  
ACTIVE LOG: 16 JUN 2012 16:45  
ACTIVE LOG: 16 JUN 2012 18:05  
ACTIVE LOG: 18 JUN 2012 19:26  
ACTIVE LOG: 20 JUN 2012 07:07  
ACTIVE LOG: 20 JUN 2012 09:29  
ACTIVE LOG: 20 JUN 2012 13:22  
ACTIVE LOG: 01 JULY 2012 12:04





**CONNECTICUT STATE POLICE**  
**WESTERN DISTRICT MAJOR CRIME SQUAD**  
*CFS # 12-00 704 559      Sandy Hook Elementary School*



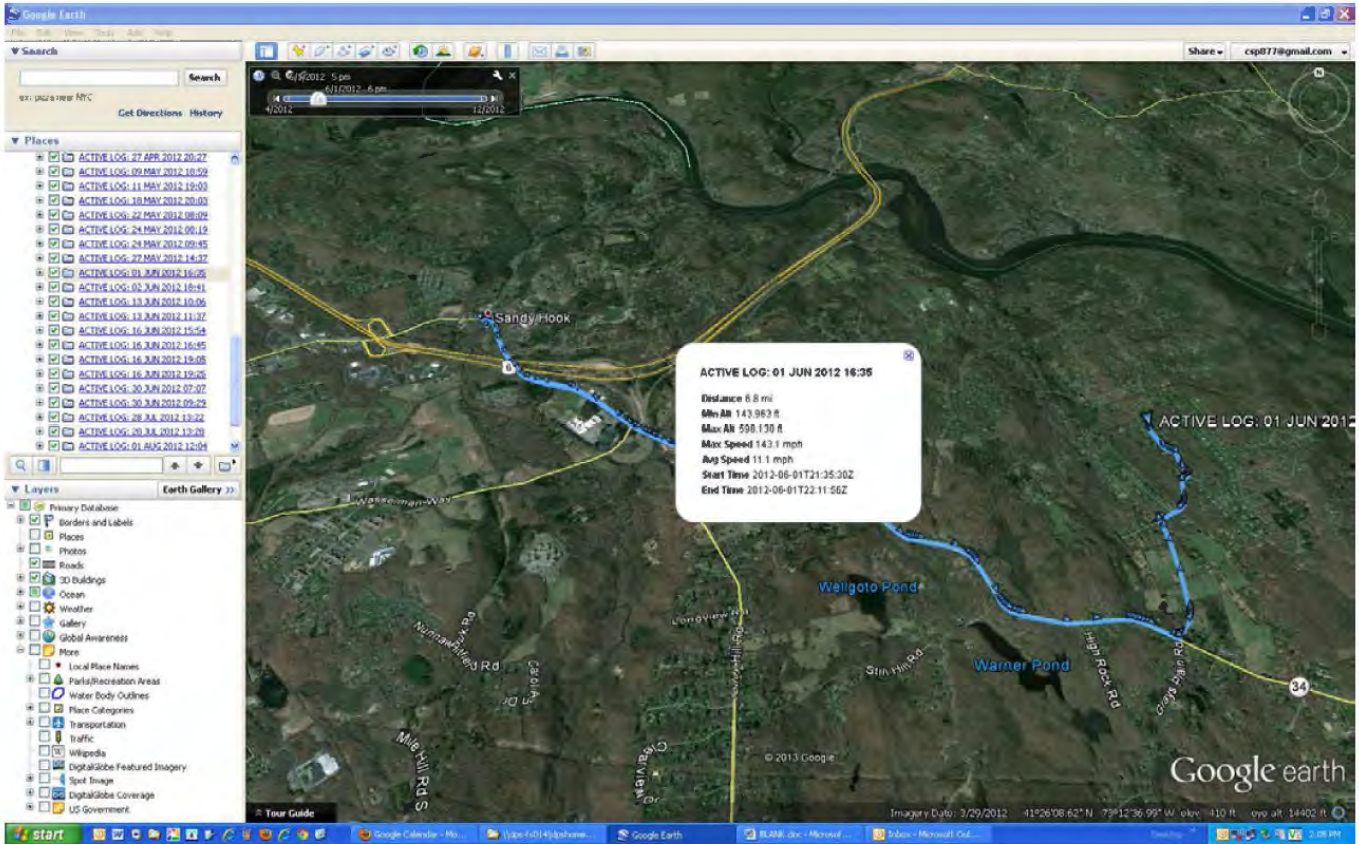
**Detective John Kimball**  
**WDMCS Troop G**



**CONNECTICUT STATE POLICE**  
**WESTERN DISTRICT MAJOR CRIME SQUAD**  
CFS # 12-00 704 559      Sandy Hook Elementary School



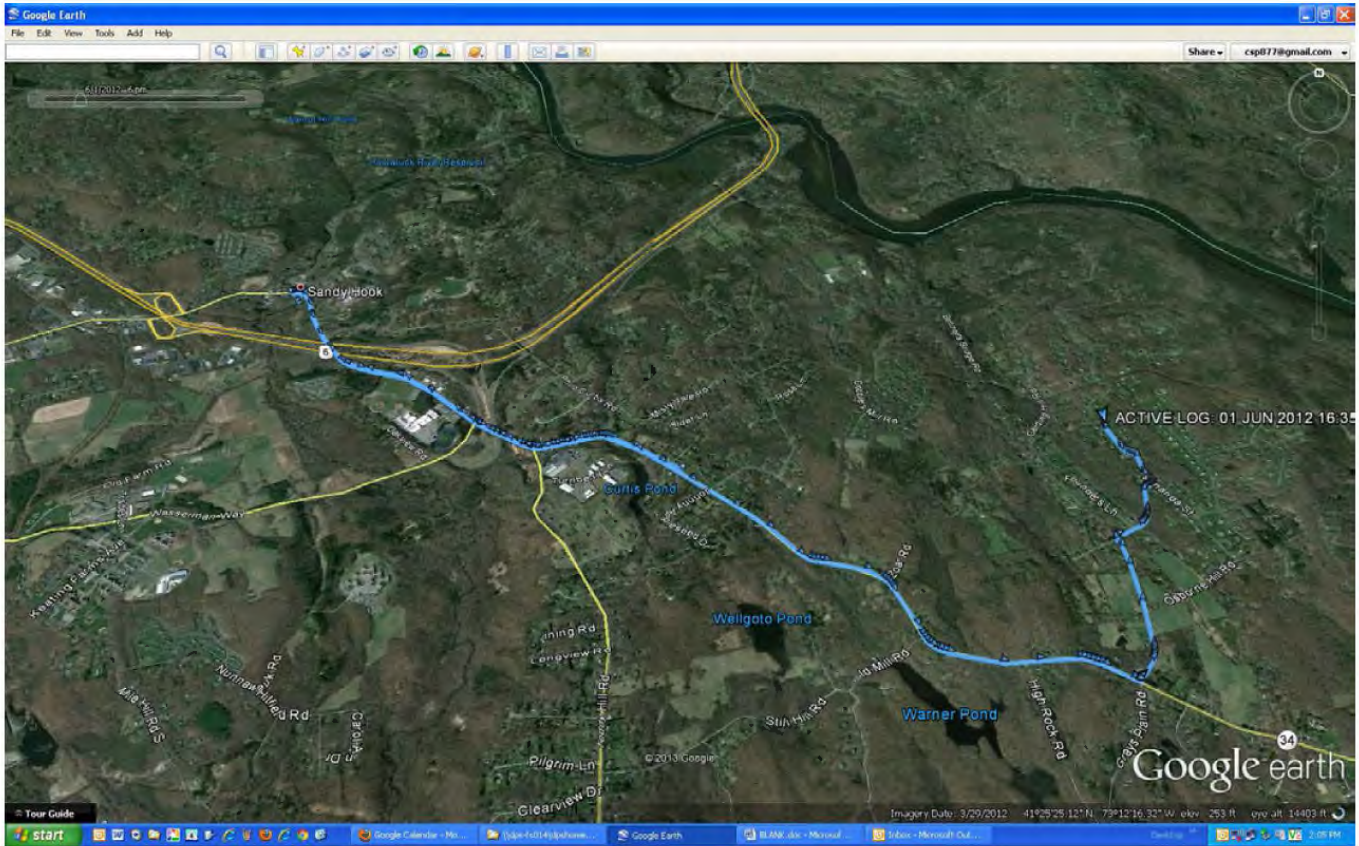
01 JUN 2012 1635 EST







**CONNECTICUT STATE POLICE**  
**WESTERN DISTRICT MAJOR CRIME SQUAD**  
*CFS # 12-00 704 559      Sandy Hook Elementary School*



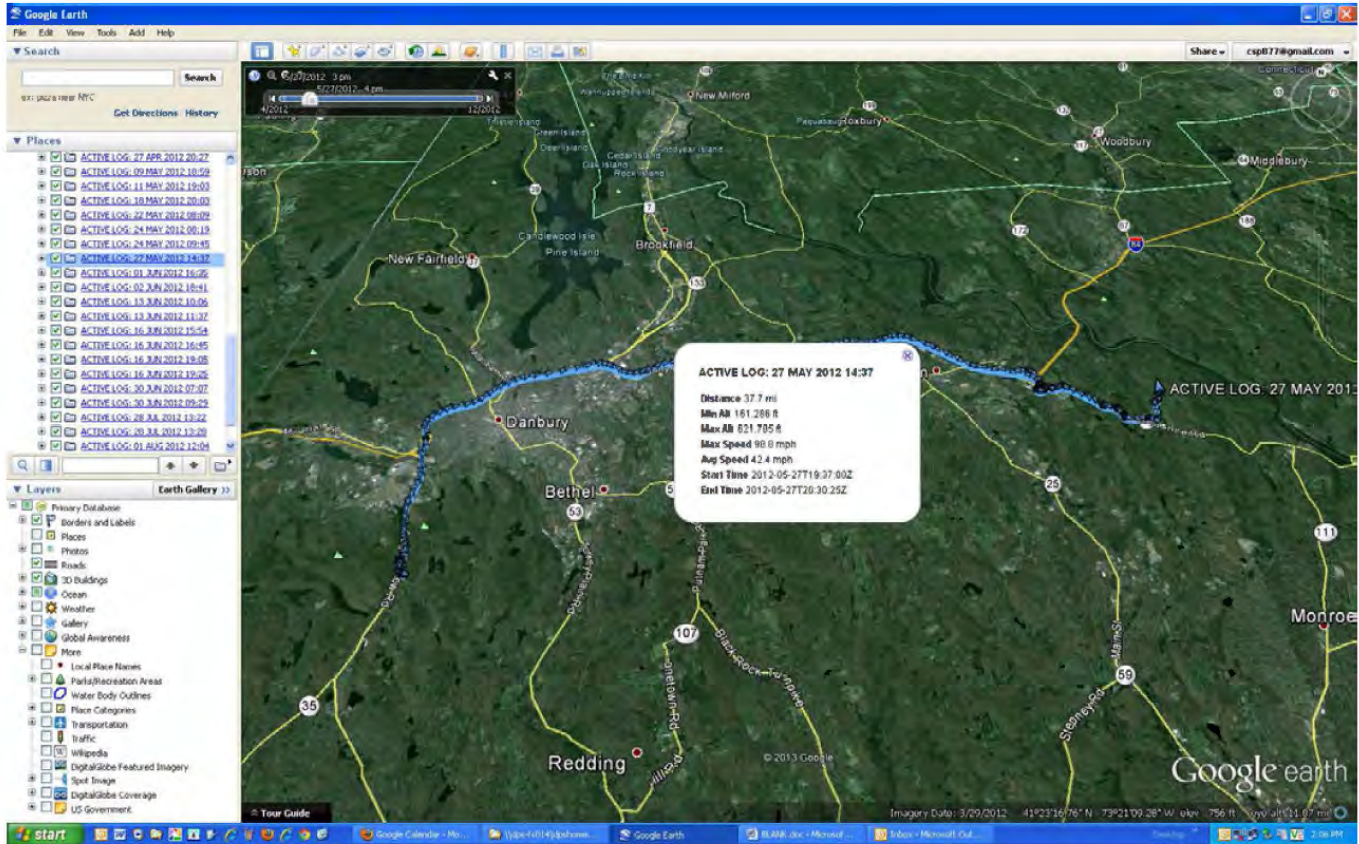
**Detective John Kimball**  
**WDMCS Troop G**



**CONNECTICUT STATE POLICE**  
**WESTERN DISTRICT MAJOR CRIME SQUAD**  
*CFS # 12-00 704 559 Sandy Hook Elementary School*



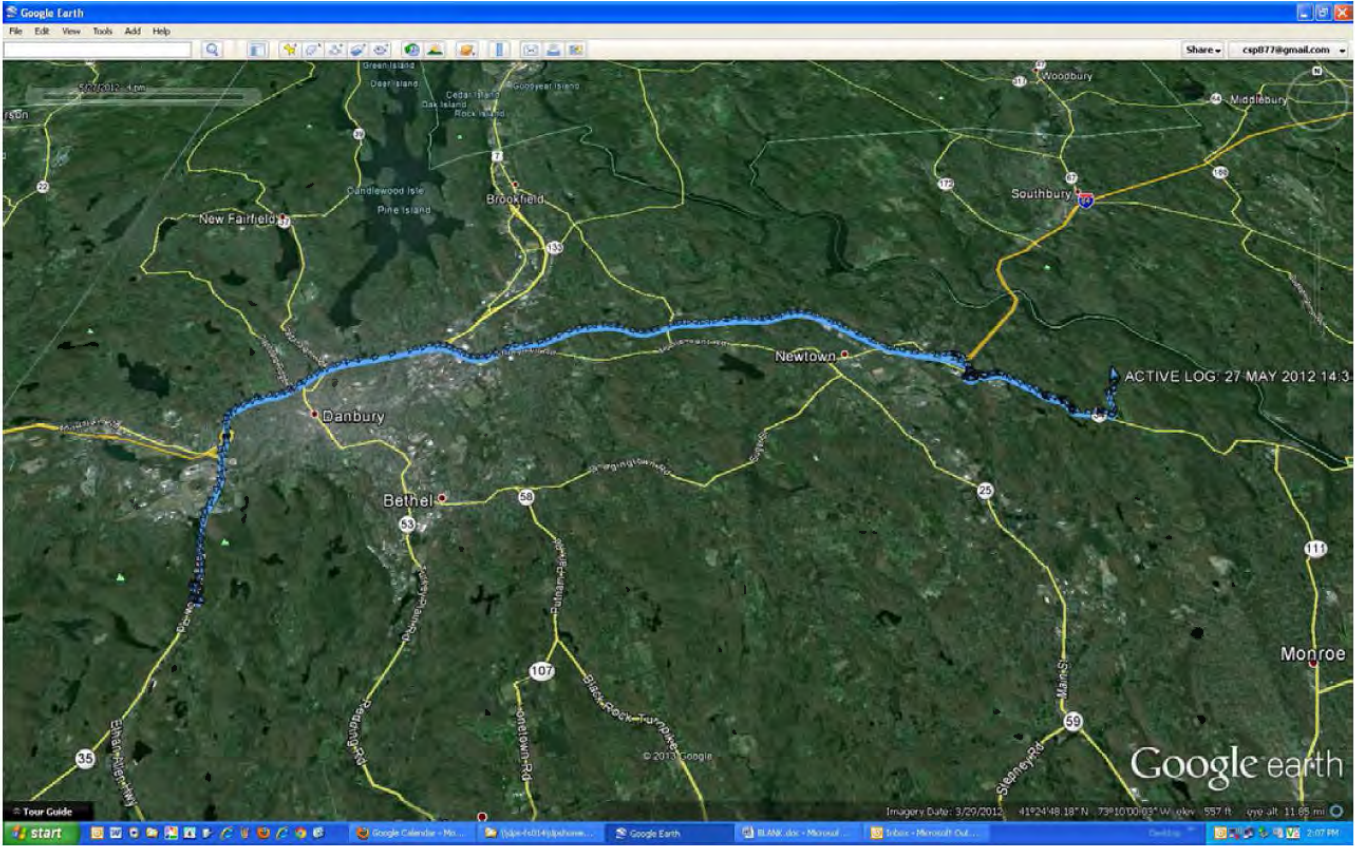
27 MAY 2012 1437 EST







**CONNECTICUT STATE POLICE**  
**WESTERN DISTRICT MAJOR CRIME SQUAD**  
*CFS # 12-00 704 559      Sandy Hook Elementary School*

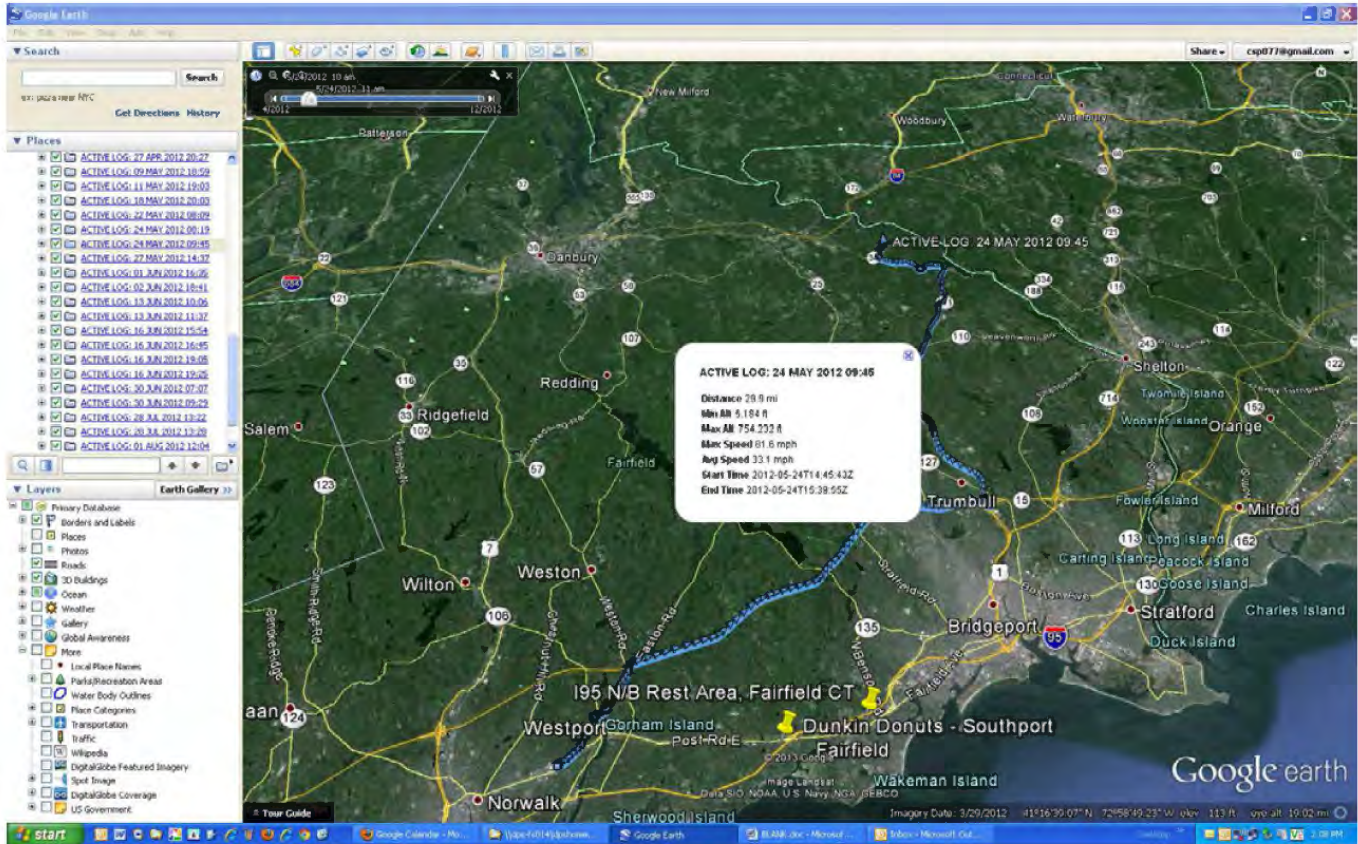




**CONNECTICUT STATE POLICE**  
**WESTERN DISTRICT MAJOR CRIME SQUAD**  
*CFS # 12-00 704 559 Sandy Hook Elementary School*



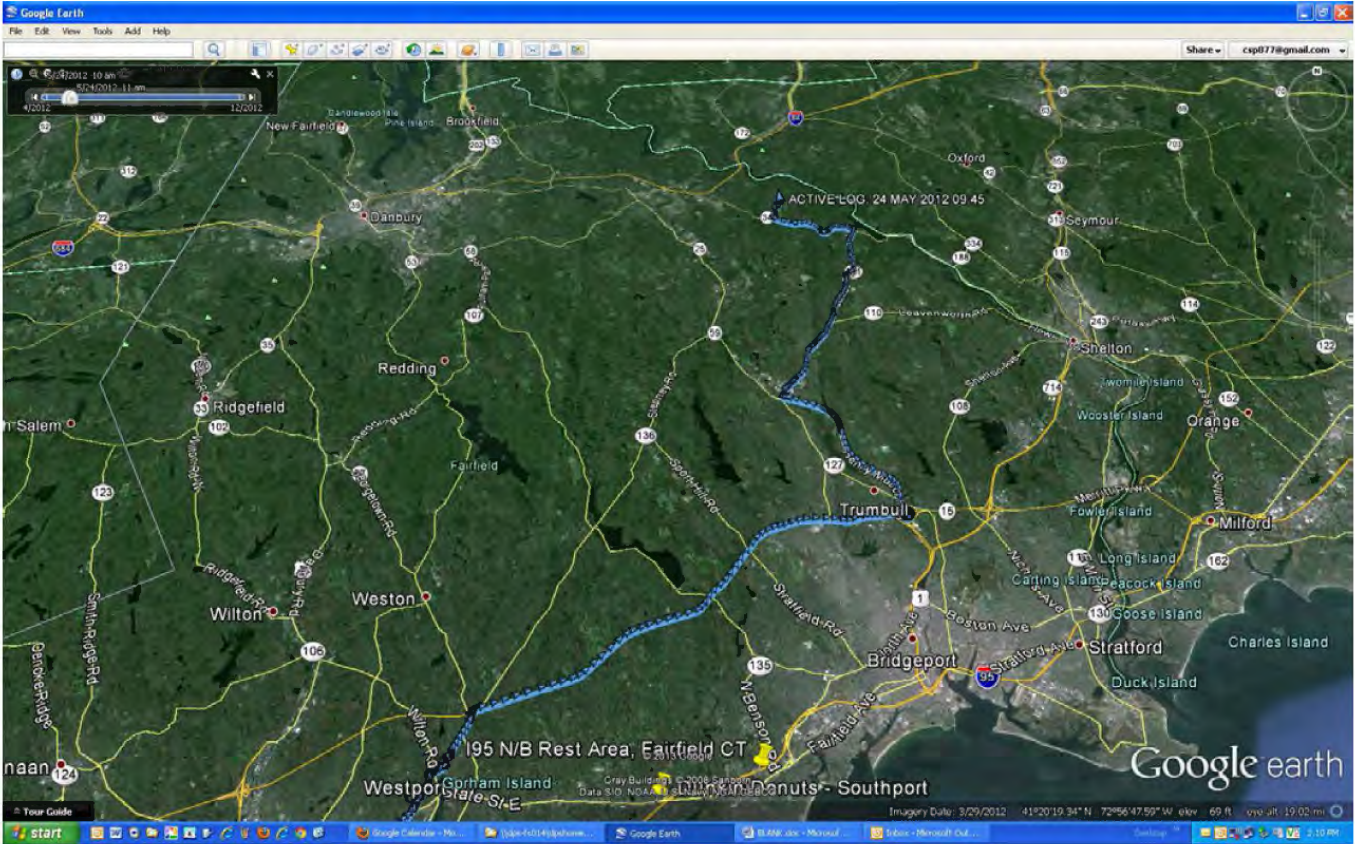
24 MAY 2012 0945 EST







**CONNECTICUT STATE POLICE**  
**WESTERN DISTRICT MAJOR CRIME SQUAD**  
*CFS # 12-00 704 559*      *Sandy Hook Elementary School*

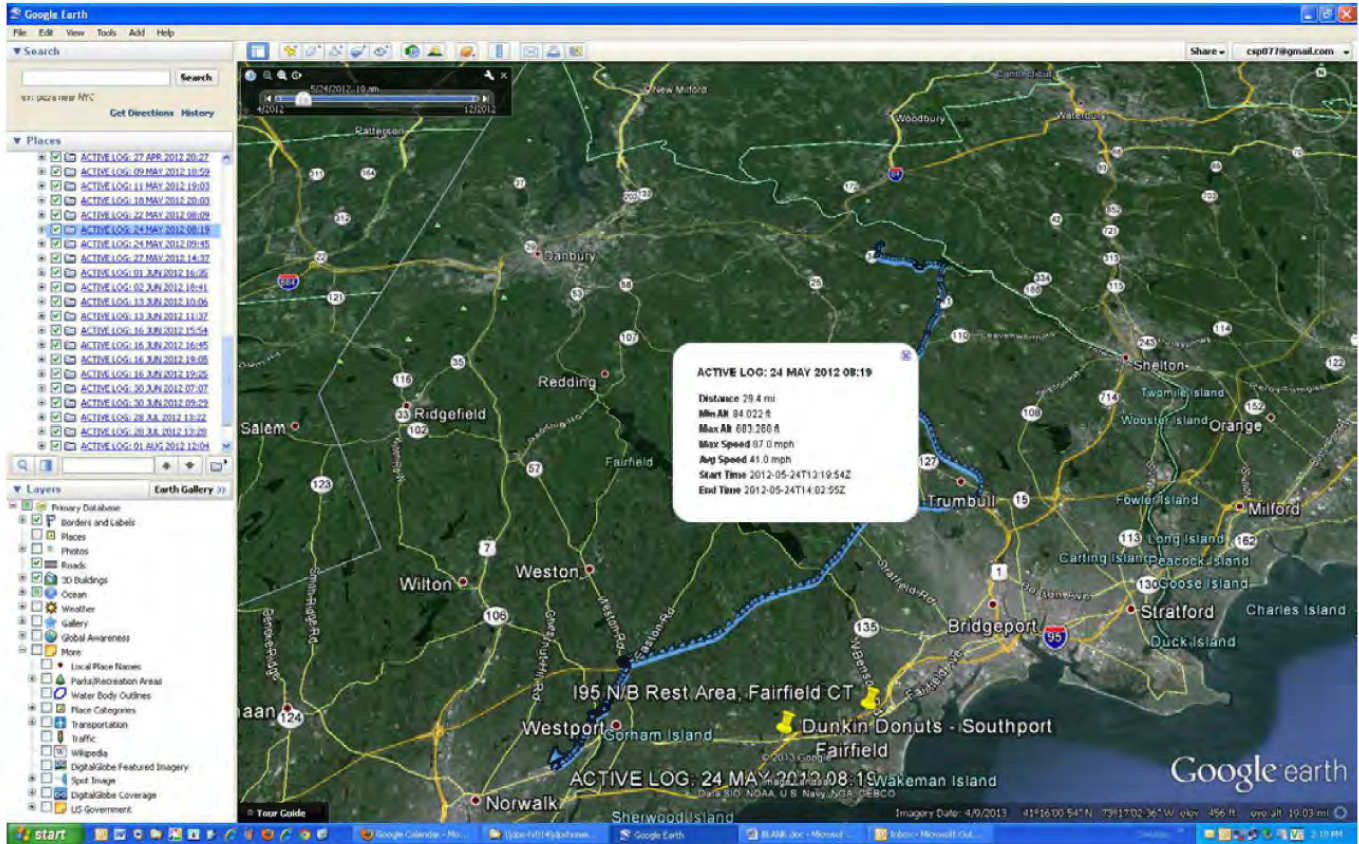




**CONNECTICUT STATE POLICE**  
**WESTERN DISTRICT MAJOR CRIME SQUAD**  
CFS # 12-00 704 559      Sandy Hook Elementary School



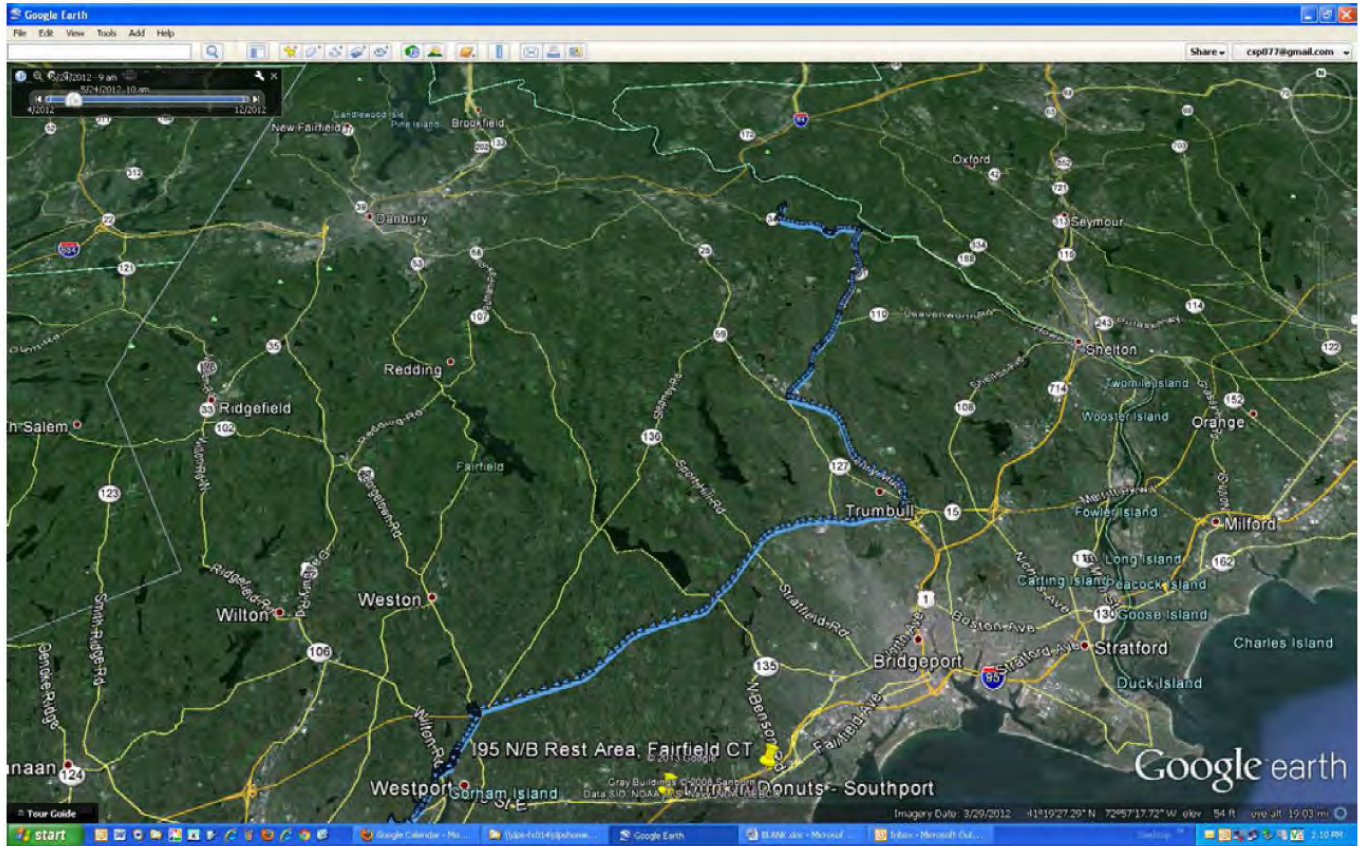
24 MAY 2012 0819 EST







**CONNECTICUT STATE POLICE**  
**WESTERN DISTRICT MAJOR CRIME SQUAD**  
*CFS # 12-00 704 559*      *Sandy Hook Elementary School*



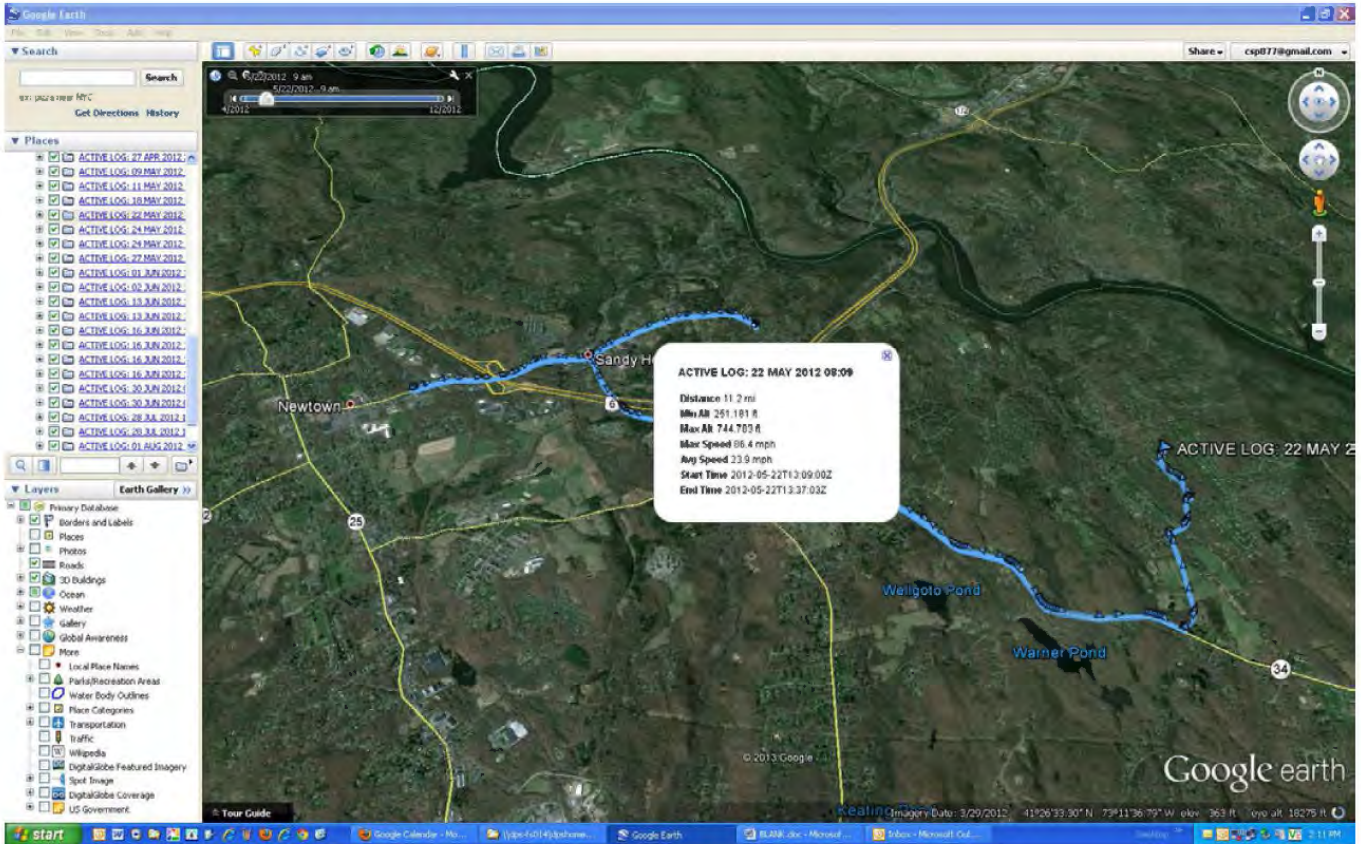
**Detective John Kimball**  
**WDMCS Troop G**



**CONNECTICUT STATE POLICE**  
**WESTERN DISTRICT MAJOR CRIME SQUAD**  
CFS # 12-00 704 559      *Sandy Hook Elementary School*



22 MAY 2012 0809 EST

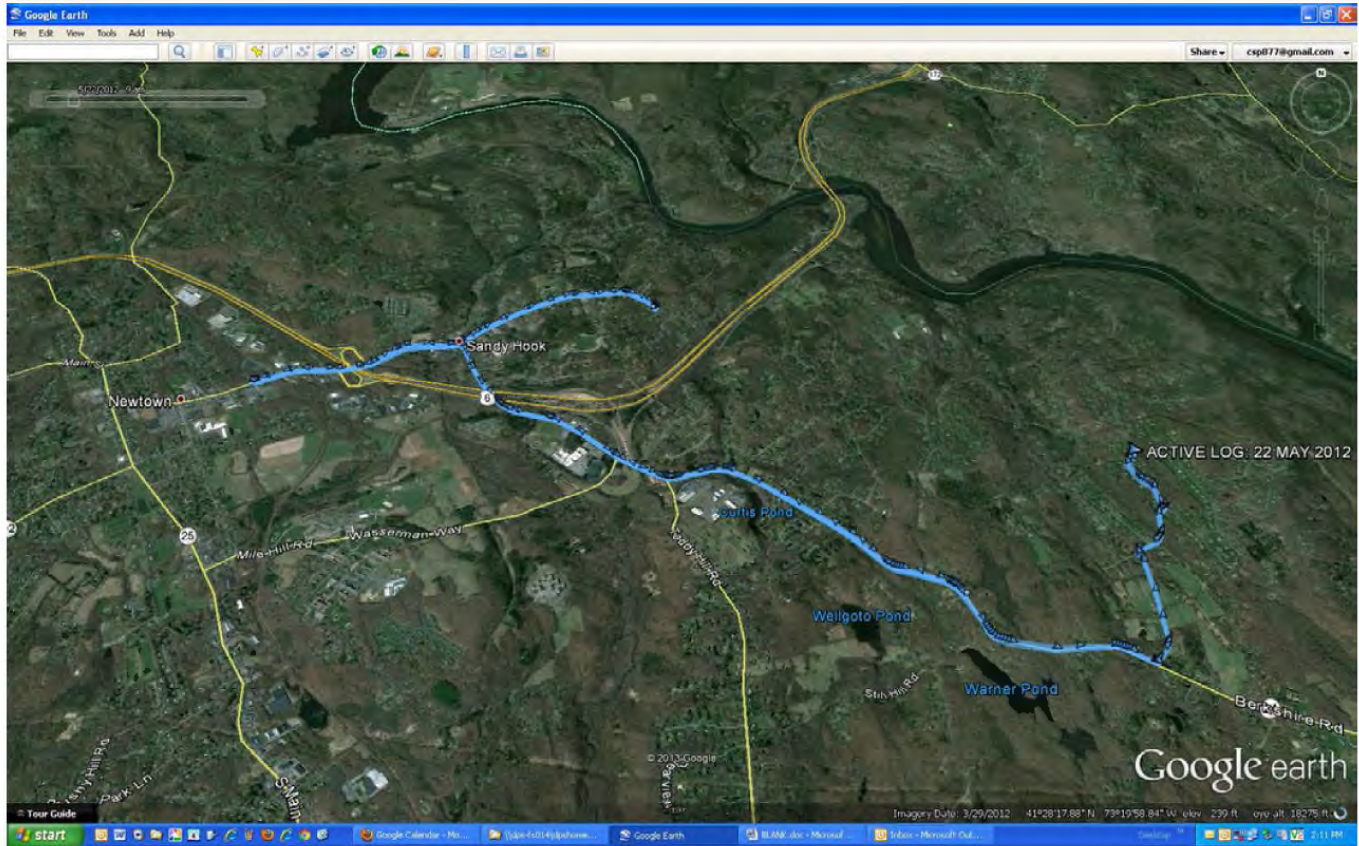


**Detective John Kimball**  
**WDMCS Troop G**





**CONNECTICUT STATE POLICE**  
**WESTERN DISTRICT MAJOR CRIME SQUAD**  
*CFS # 12-00 704 559      Sandy Hook Elementary School*

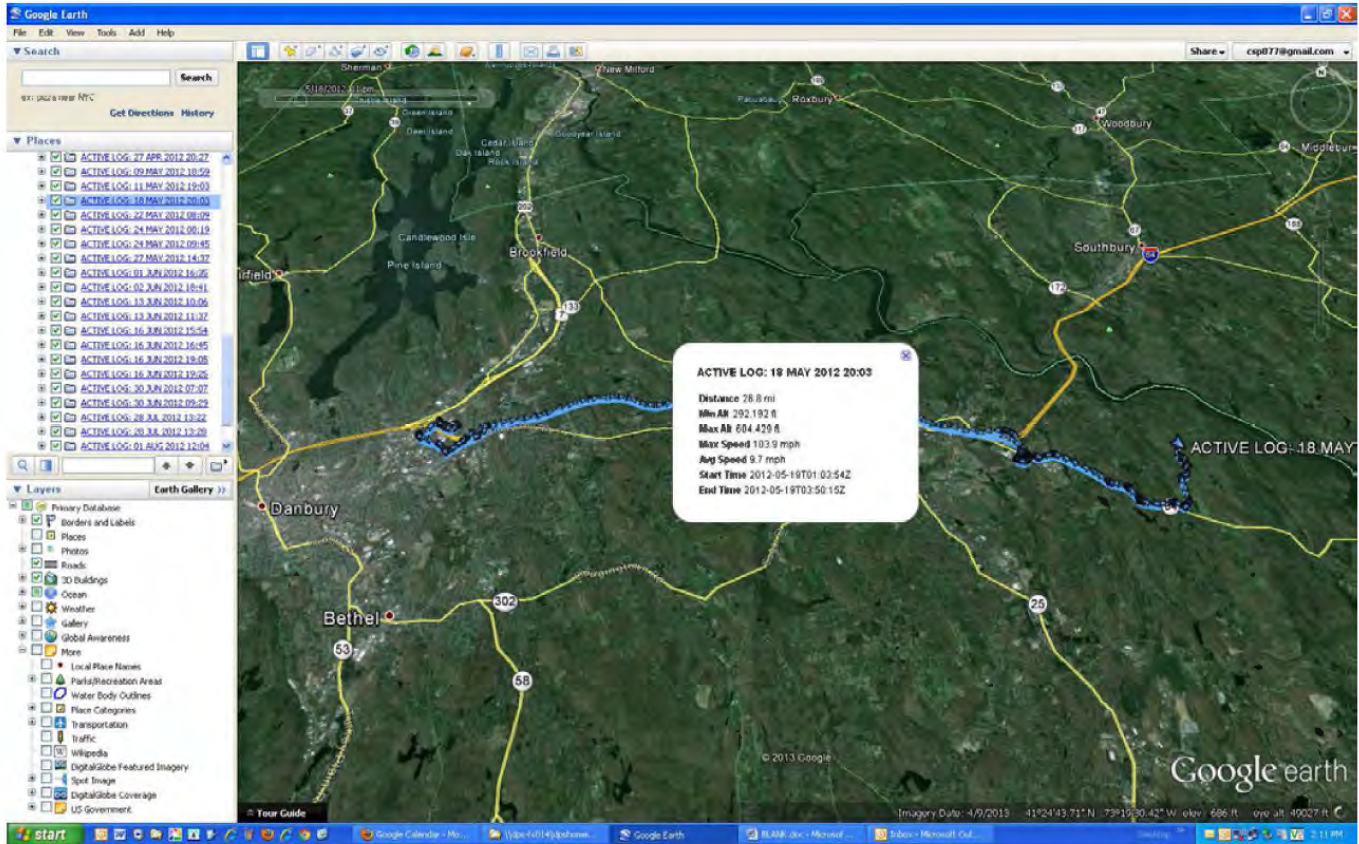




**CONNECTICUT STATE POLICE**  
**WESTERN DISTRICT MAJOR CRIME SQUAD**  
*CFS # 12-00 704 559 Sandy Hook Elementary School*



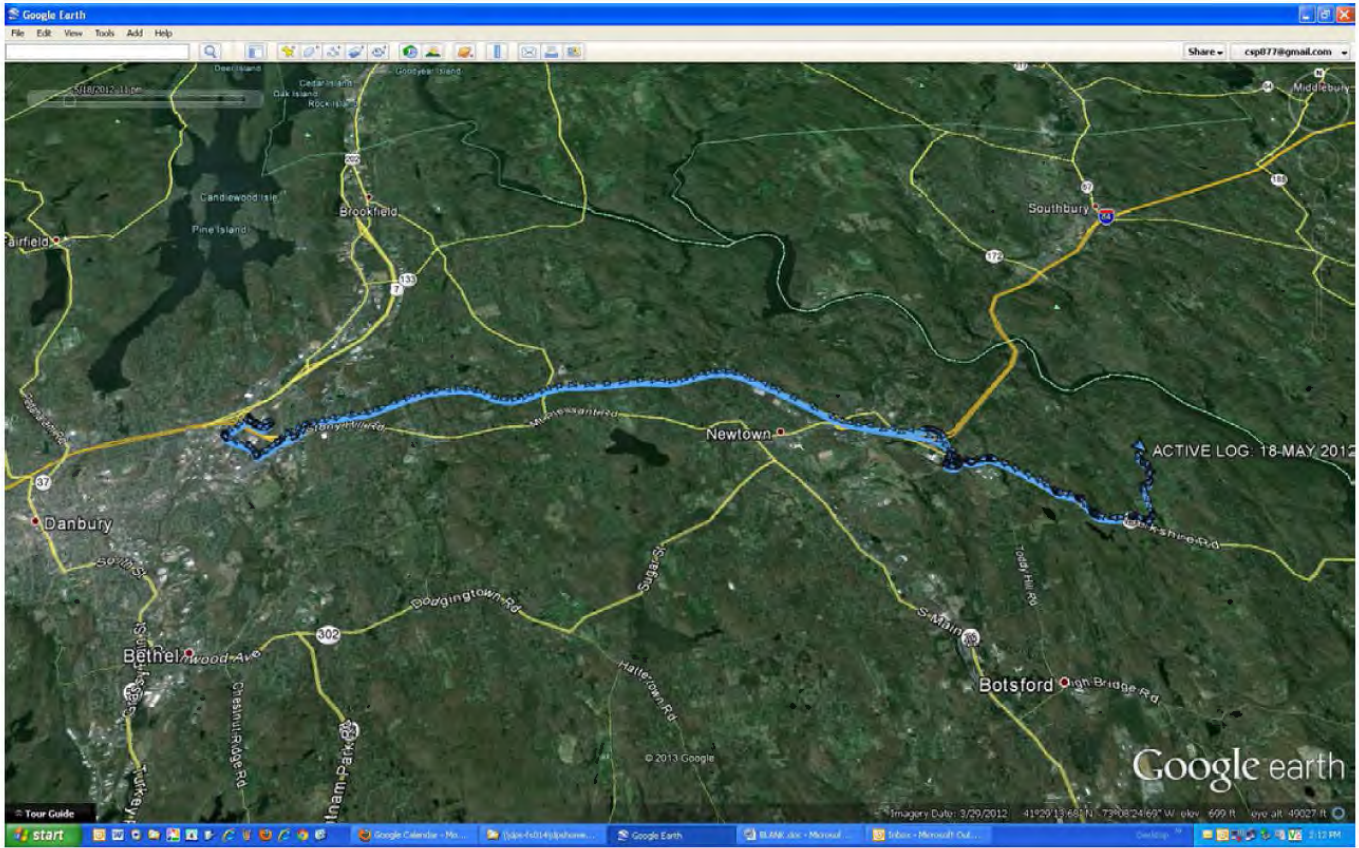
18 MAY 2012 2003 EST







**CONNECTICUT STATE POLICE**  
**WESTERN DISTRICT MAJOR CRIME SQUAD**  
*CFS # 12-00 704 559      Sandy Hook Elementary School*

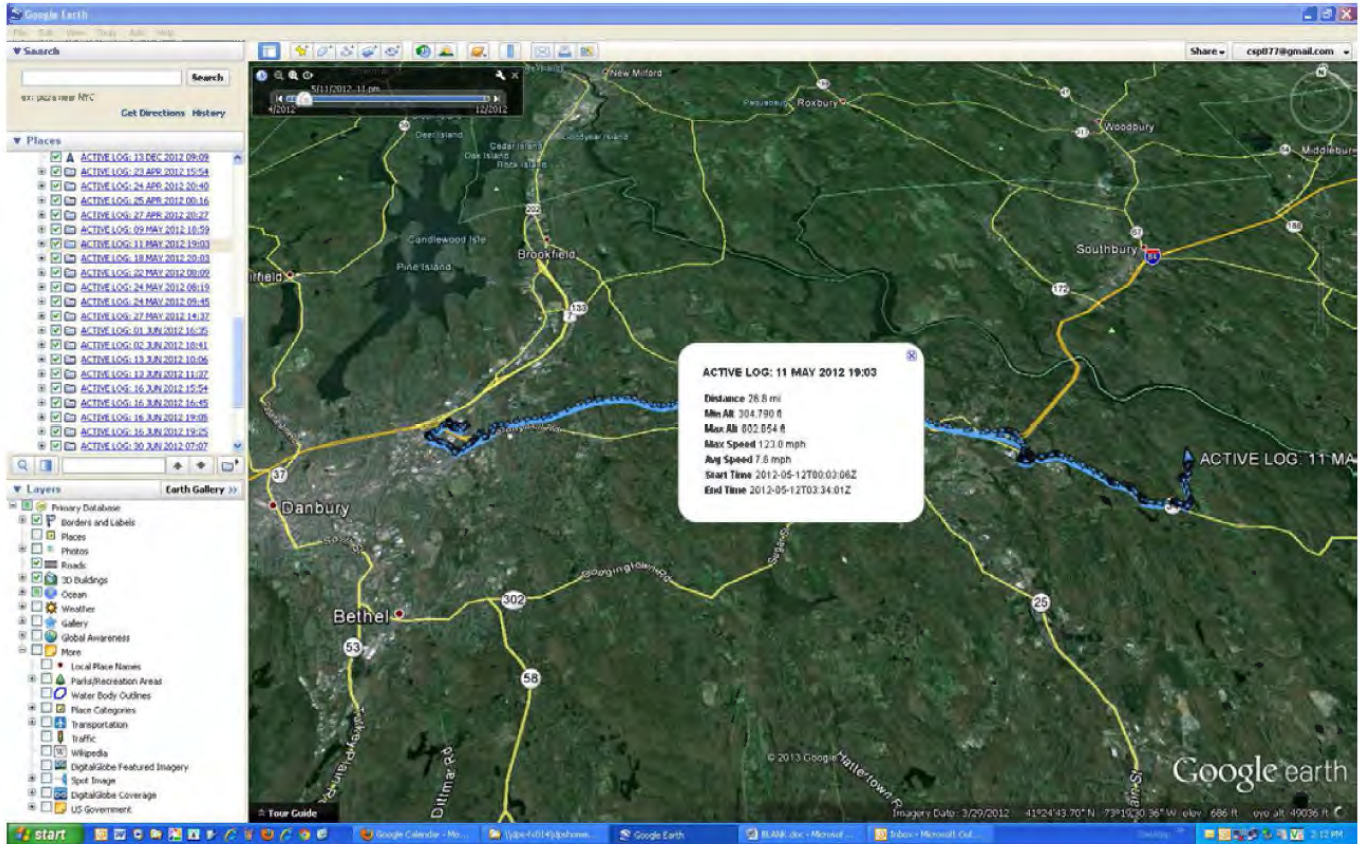




**CONNECTICUT STATE POLICE**  
**WESTERN DISTRICT MAJOR CRIME SQUAD**  
*CFS # 12-00 704 559 Sandy Hook Elementary School*



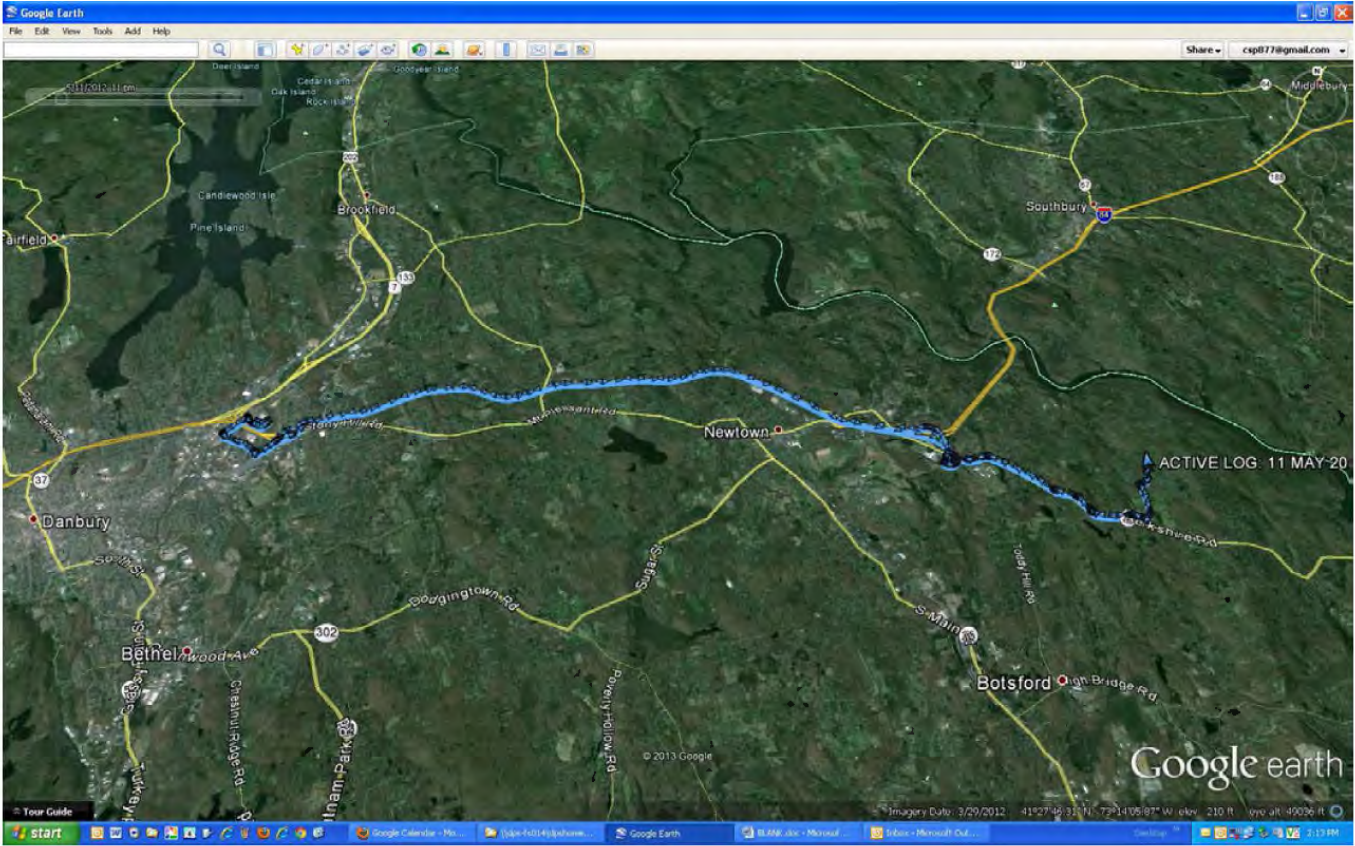
11 MAY 2012 1903 EST







**CONNECTICUT STATE POLICE**  
**WESTERN DISTRICT MAJOR CRIME SQUAD**  
*CFS # 12-00 704 559*      *Sandy Hook Elementary School*



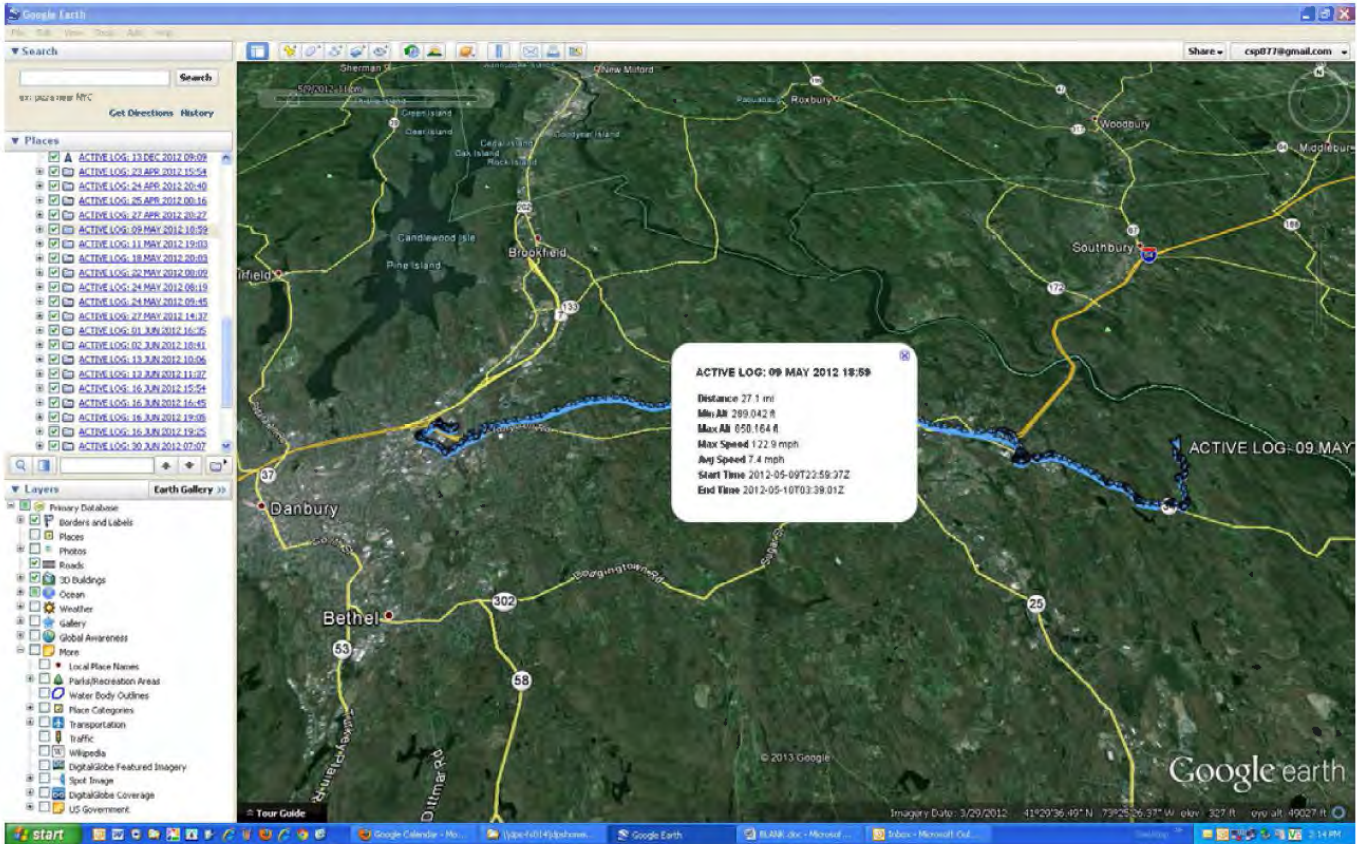
**Detective John Kimball**  
**WDMCS Troop G**



**CONNECTICUT STATE POLICE**  
**WESTERN DISTRICT MAJOR CRIME SQUAD**  
*CFS # 12-00 704 559*      *Sandy Hook Elementary School*



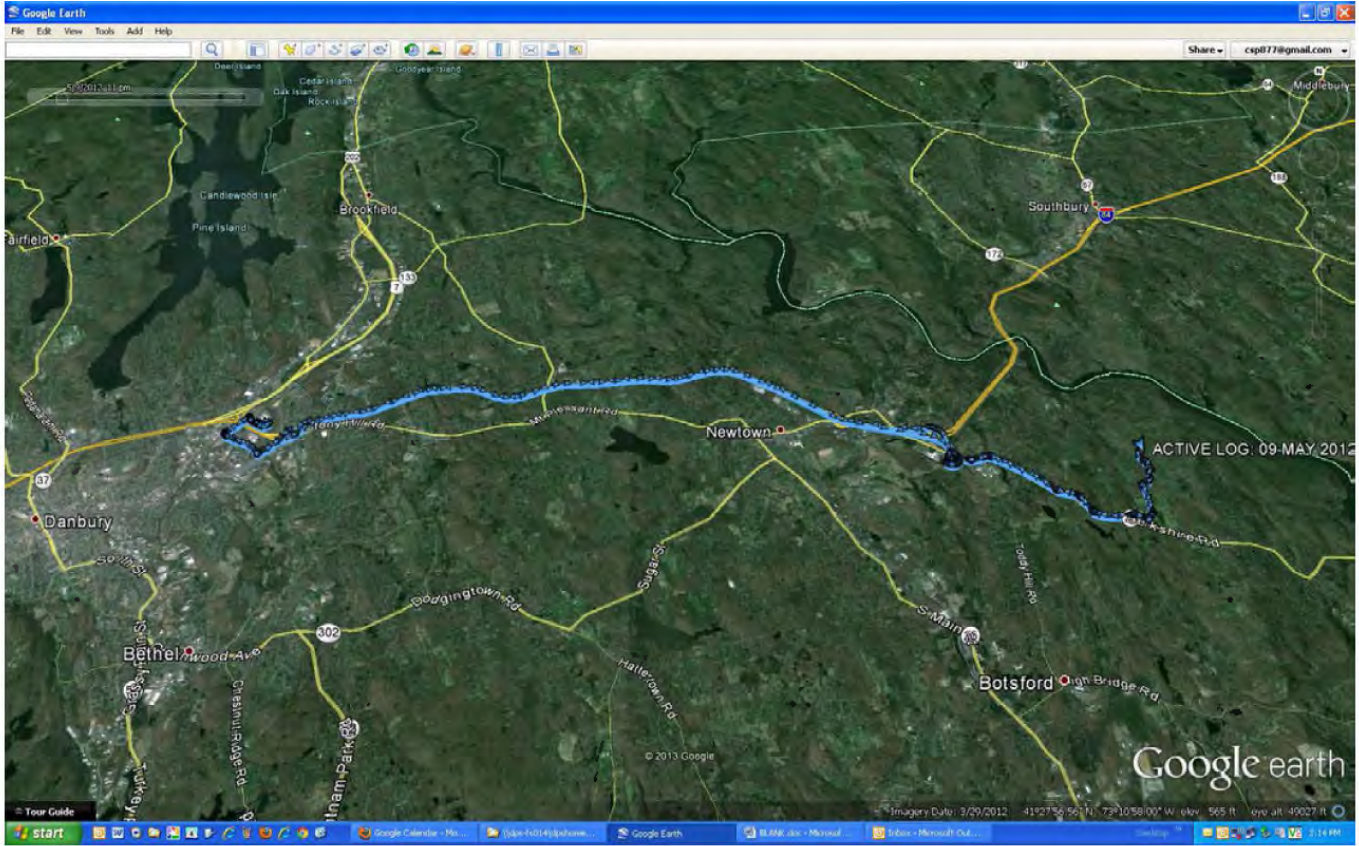
09 MAY 2012 1859 EST







**CONNECTICUT STATE POLICE**  
**WESTERN DISTRICT MAJOR CRIME SQUAD**  
*CFS # 12-00 704 559      Sandy Hook Elementary School*

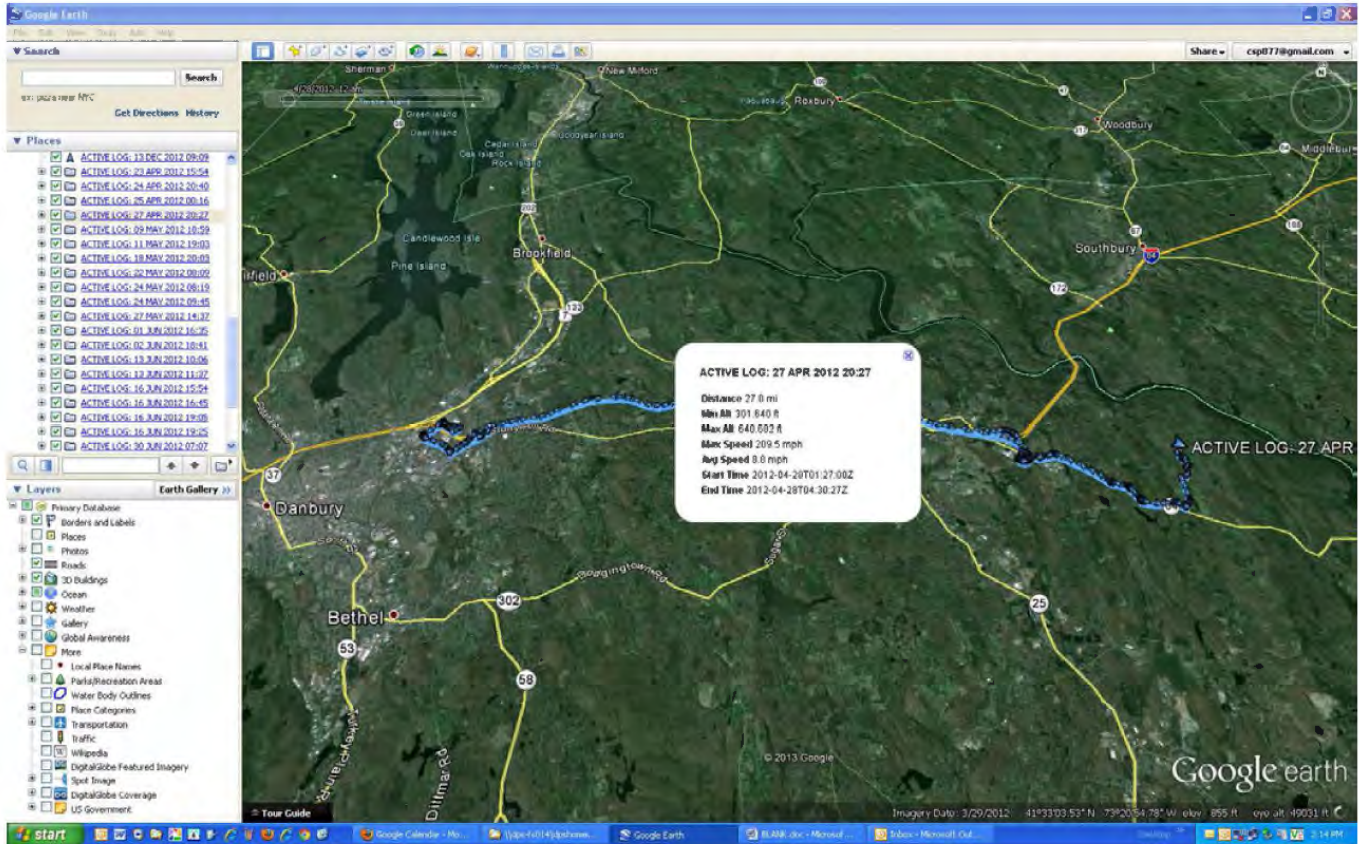




**CONNECTICUT STATE POLICE**  
**WESTERN DISTRICT MAJOR CRIME SQUAD**  
*CFS # 12-00 704 559      Sandy Hook Elementary School*



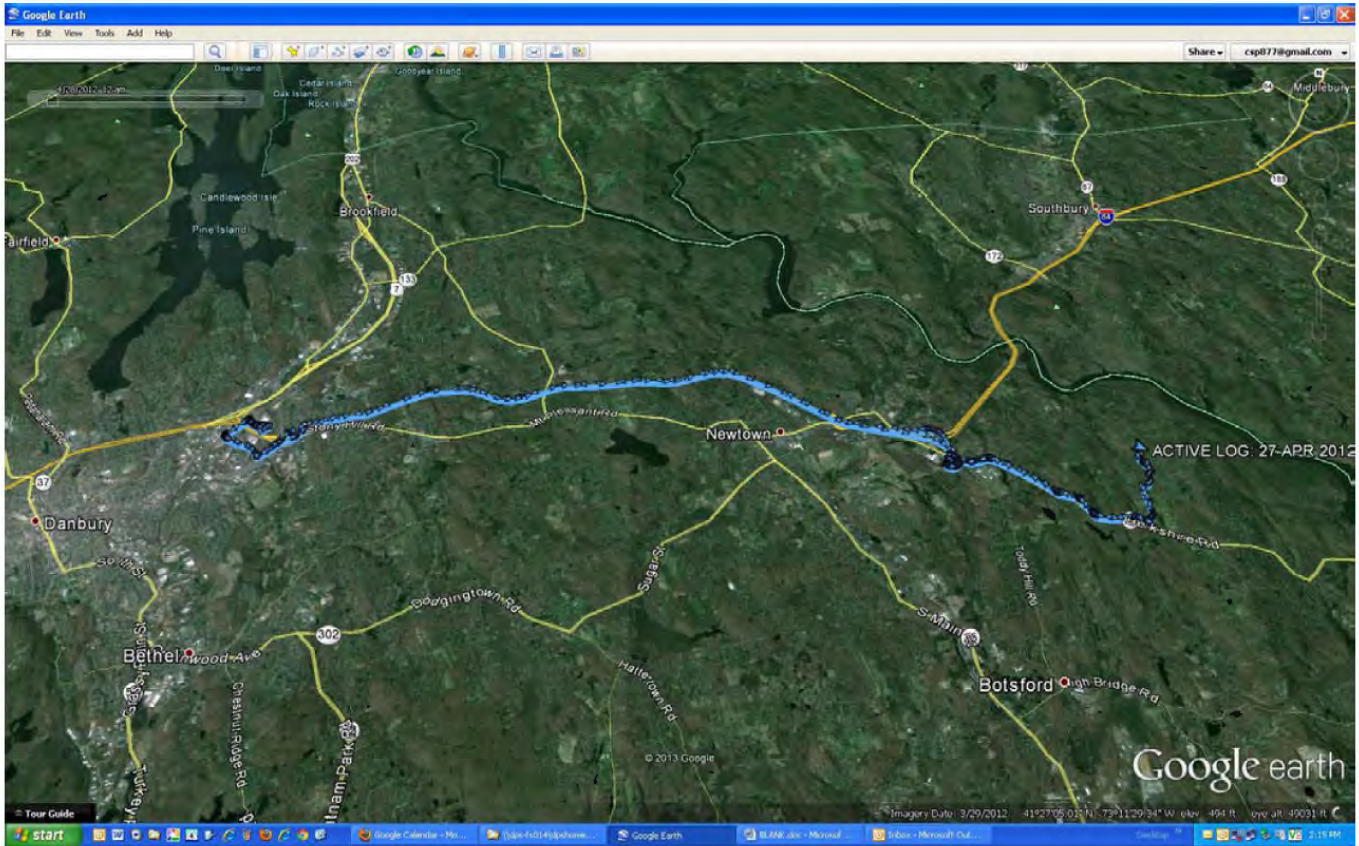
27 APR 2012 2027 EST







**CONNECTICUT STATE POLICE**  
**WESTERN DISTRICT MAJOR CRIME SQUAD**  
*CFS # 12-00 704 559      Sandy Hook Elementary School*

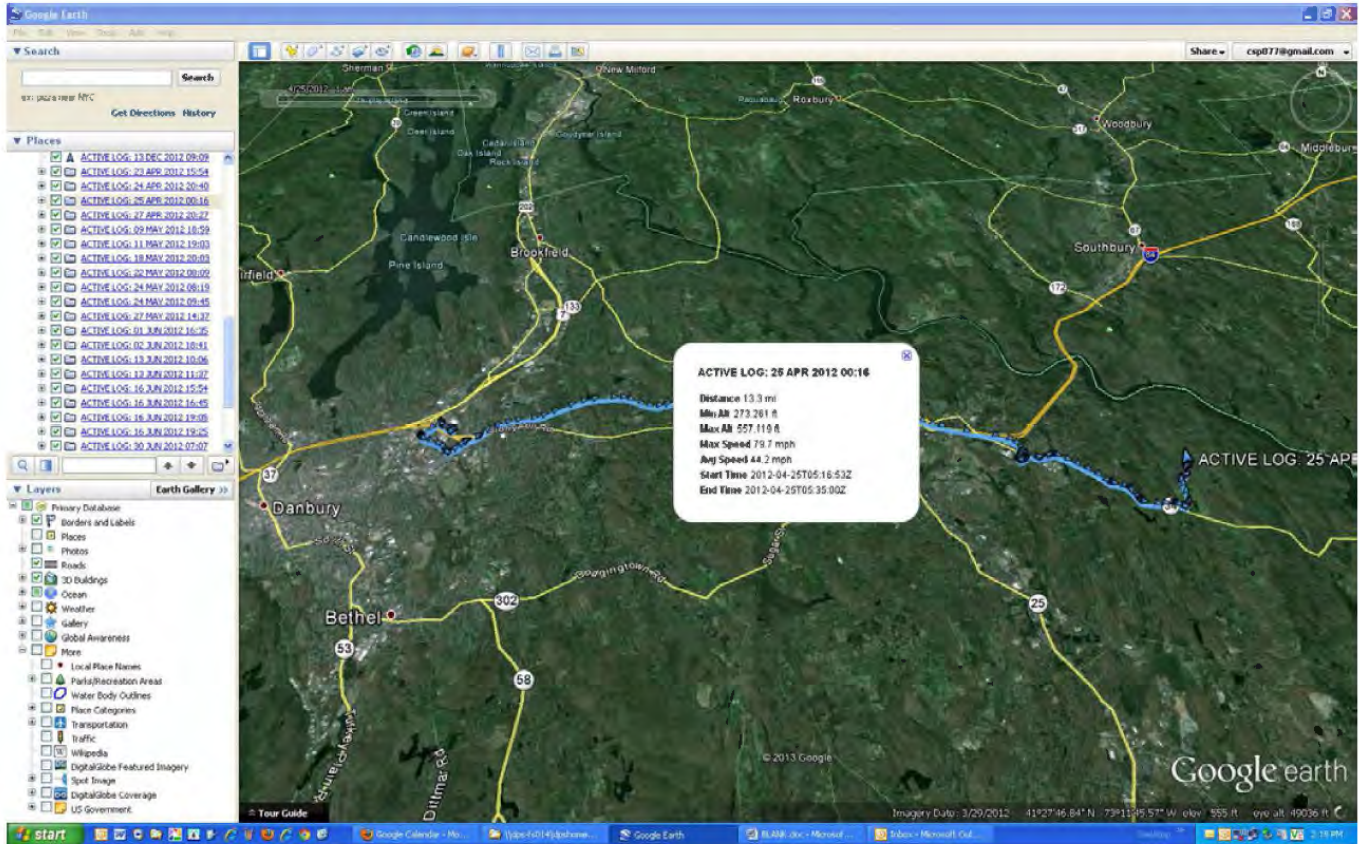




**CONNECTICUT STATE POLICE**  
**WESTERN DISTRICT MAJOR CRIME SQUAD**  
*CFS # 12-00 704 559      Sandy Hook Elementary School*



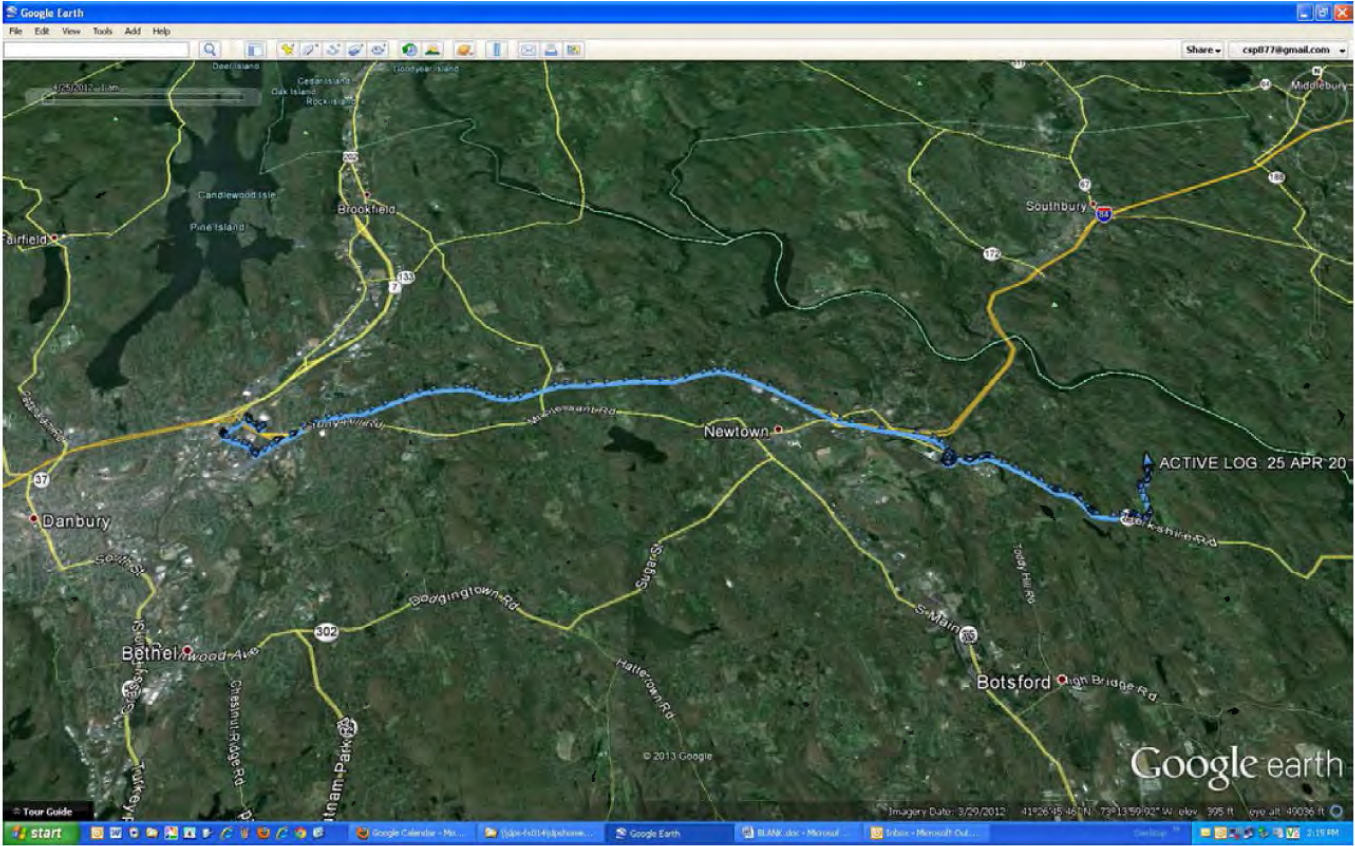
25 APR 2012 0016 EST







**CONNECTICUT STATE POLICE**  
**WESTERN DISTRICT MAJOR CRIME SQUAD**  
*CFS # 12-00 704 559      Sandy Hook Elementary School*

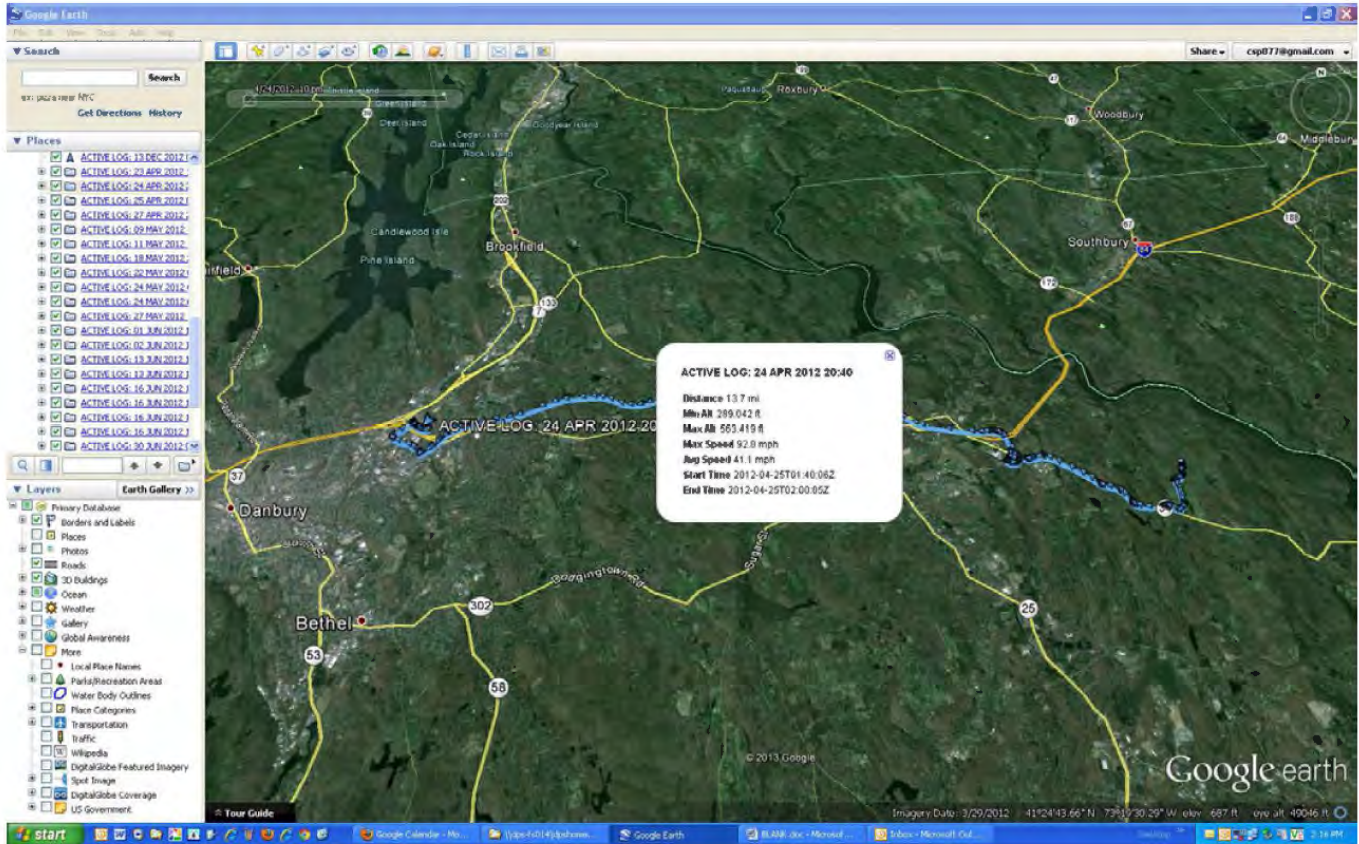




**CONNECTICUT STATE POLICE**  
**WESTERN DISTRICT MAJOR CRIME SQUAD**  
*CFS # 12-00 704 559 Sandy Hook Elementary School*



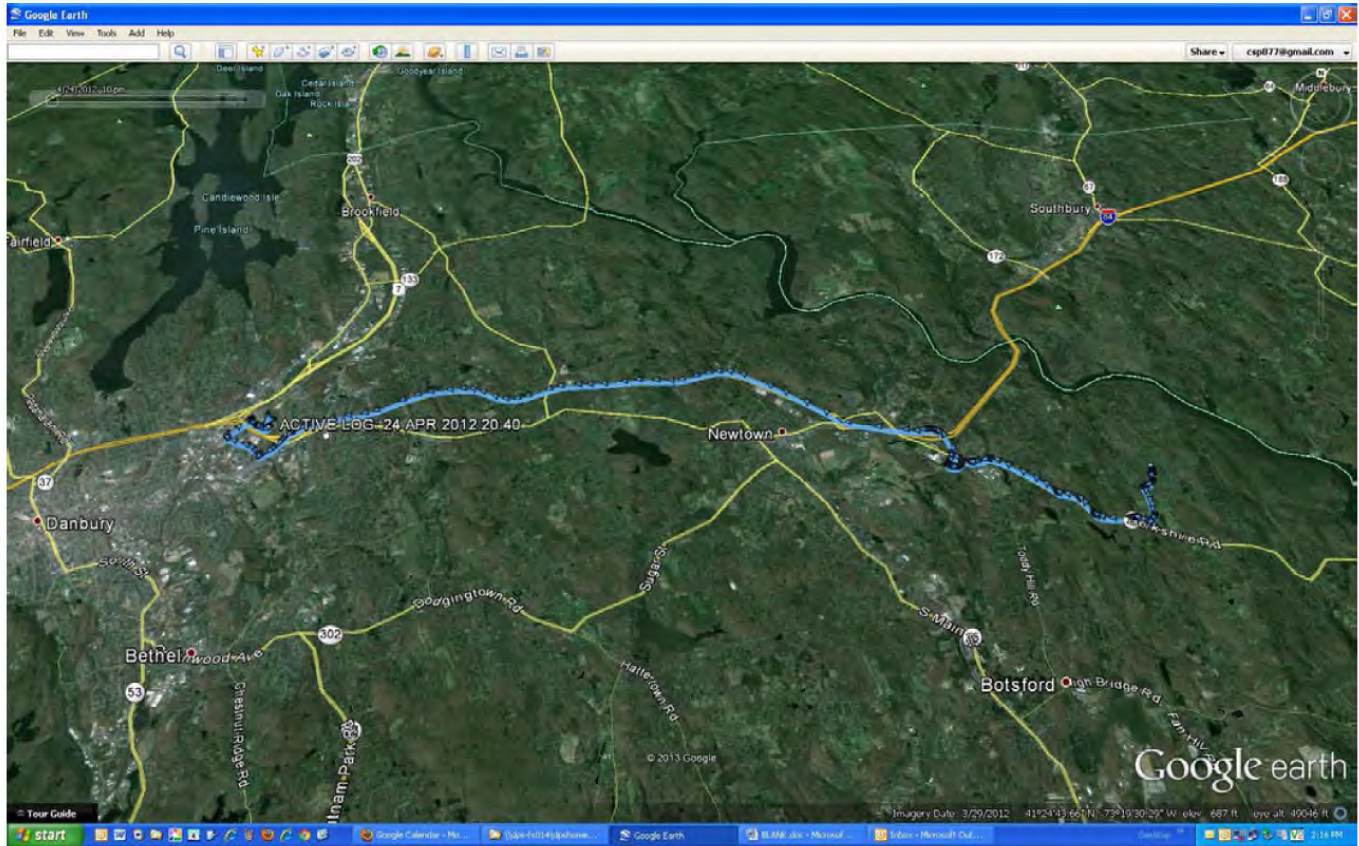
24 APR 2012 2040 EST







**CONNECTICUT STATE POLICE**  
**WESTERN DISTRICT MAJOR CRIME SQUAD**  
*CFS # 12-00 704 559      Sandy Hook Elementary School*

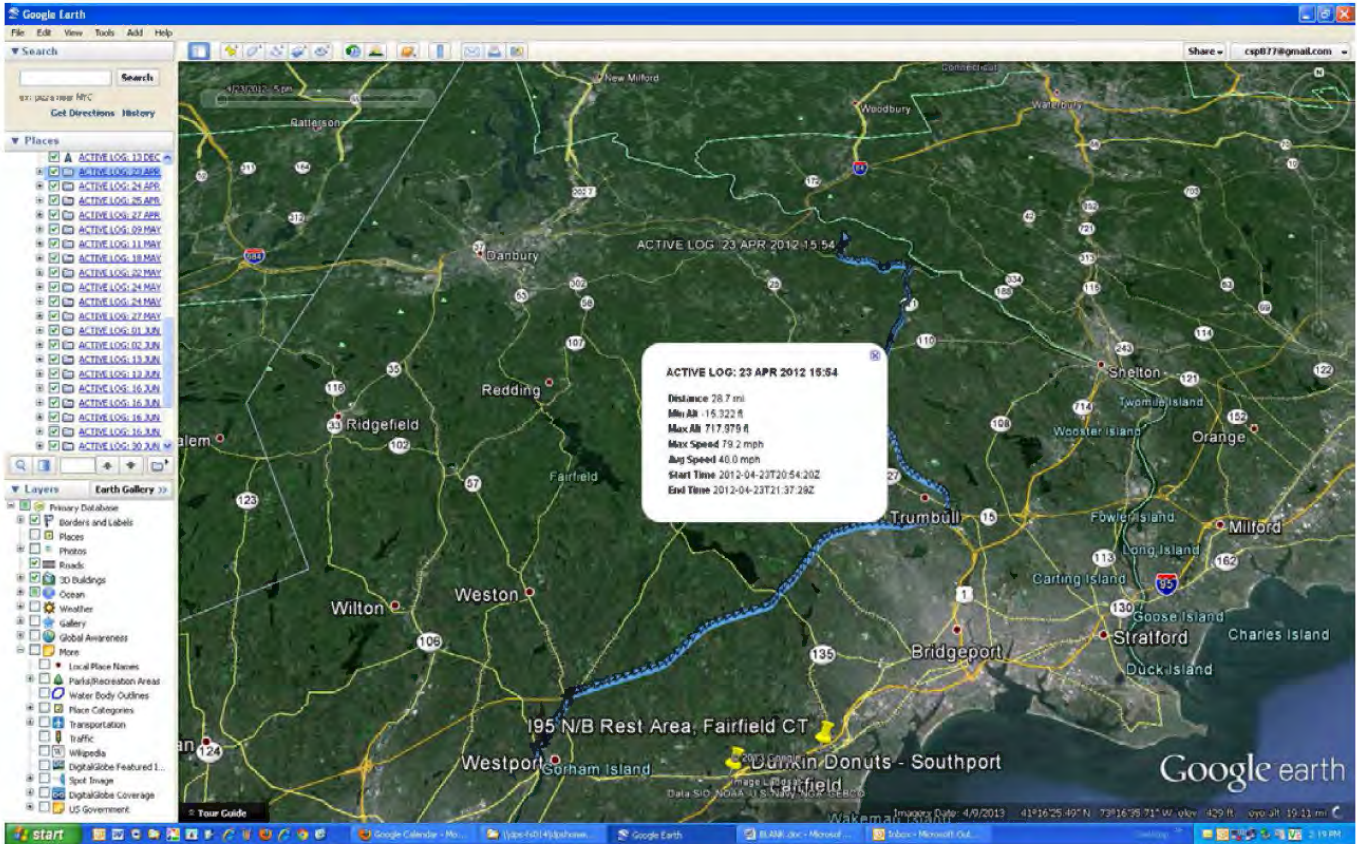




**CONNECTICUT STATE POLICE**  
**WESTERN DISTRICT MAJOR CRIME SQUAD**  
*CFS # 12-00 704 559*      *Sandy Hook Elementary School*



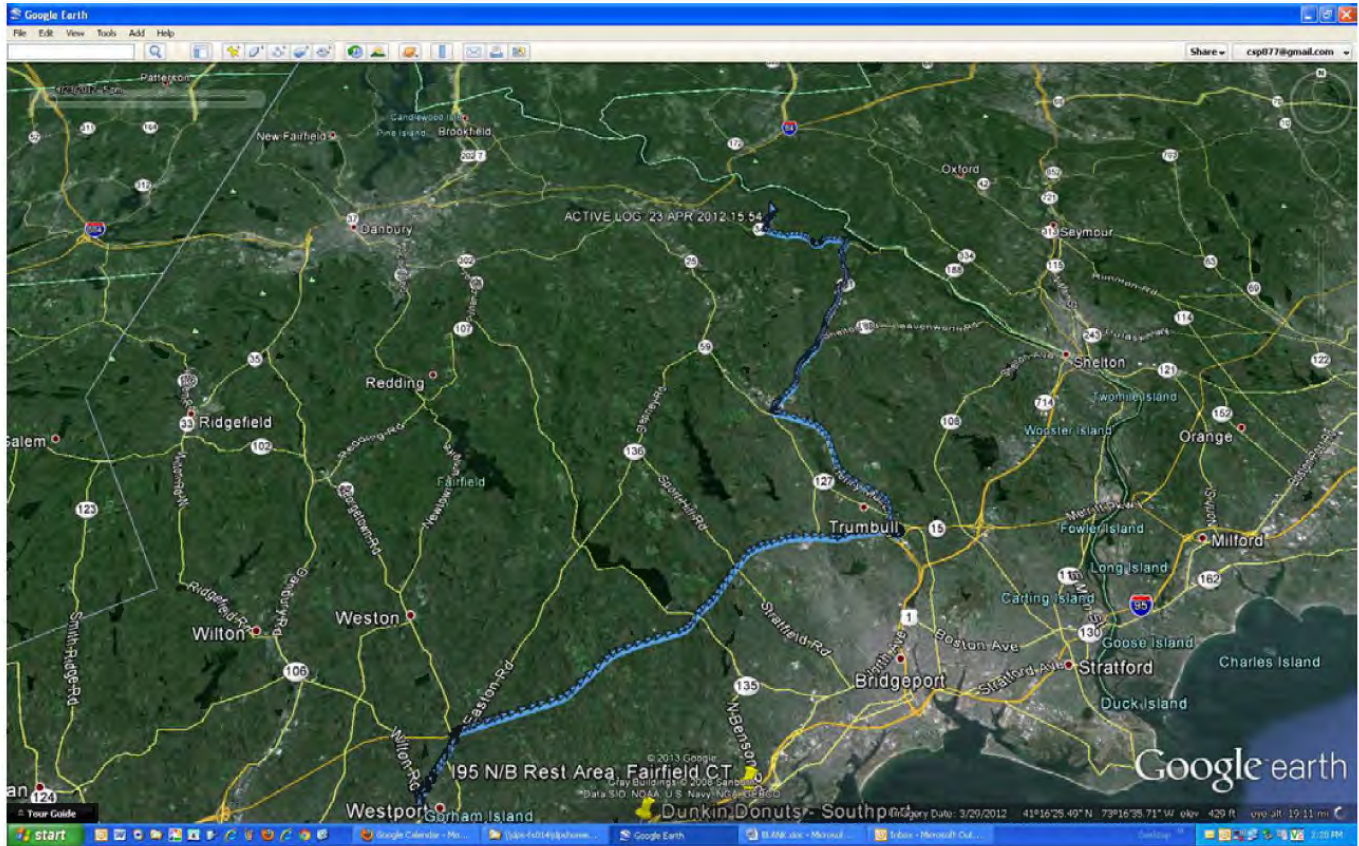
23 APR 2012 1554 EST







**CONNECTICUT STATE POLICE**  
**WESTERN DISTRICT MAJOR CRIME SQUAD**  
*CFS # 12-00 704 559*      *Sandy Hook Elementary School*





**CONNECTICUT STATE POLICE**  
**WESTERN DISTRICT MAJOR CRIME SQUAD**  
*CFS # 12-00 704 559      Sandy Hook Elementary School*

---



**Summary for Sergeant Michael DeCesare**

I have begun going through the Garmin Nuvi Model 550 GPS device removed from Lanza's 2010 Honda Civic (CT Plate: 872YEO). The device includes the following information.

- "Recently Found" locations
- "Favorites"

The device also contained twenty-six GPS Log History entries, dated from 04/23/2012 to 12/13/2012. The last entry was 12/13/2012 at 0909 hours – approximately 24 hours prior to the event.

On 12/13/2012, I believe Nancy Lanza was still out of town. At 0909 hours, the GPS tracking history shows Lanza leaving the residence on Yogananda Street, traveling south to Berkshire Road, then north to Riverside. Lanza turned right and drove past Dickenson Drive – the entry to Sandy Hook Elementary School. He continued approximately 0.6 mile, where he pulled off onto Chimney Swift Drive. Lanza eventually retraced his route and returned home at approximately 0932 hours. There is no indication that he drove down Dickenson Drive onto school property.

At this point, the GPS Tracking History appears to provide the most promise of useful information. This report is in progress.

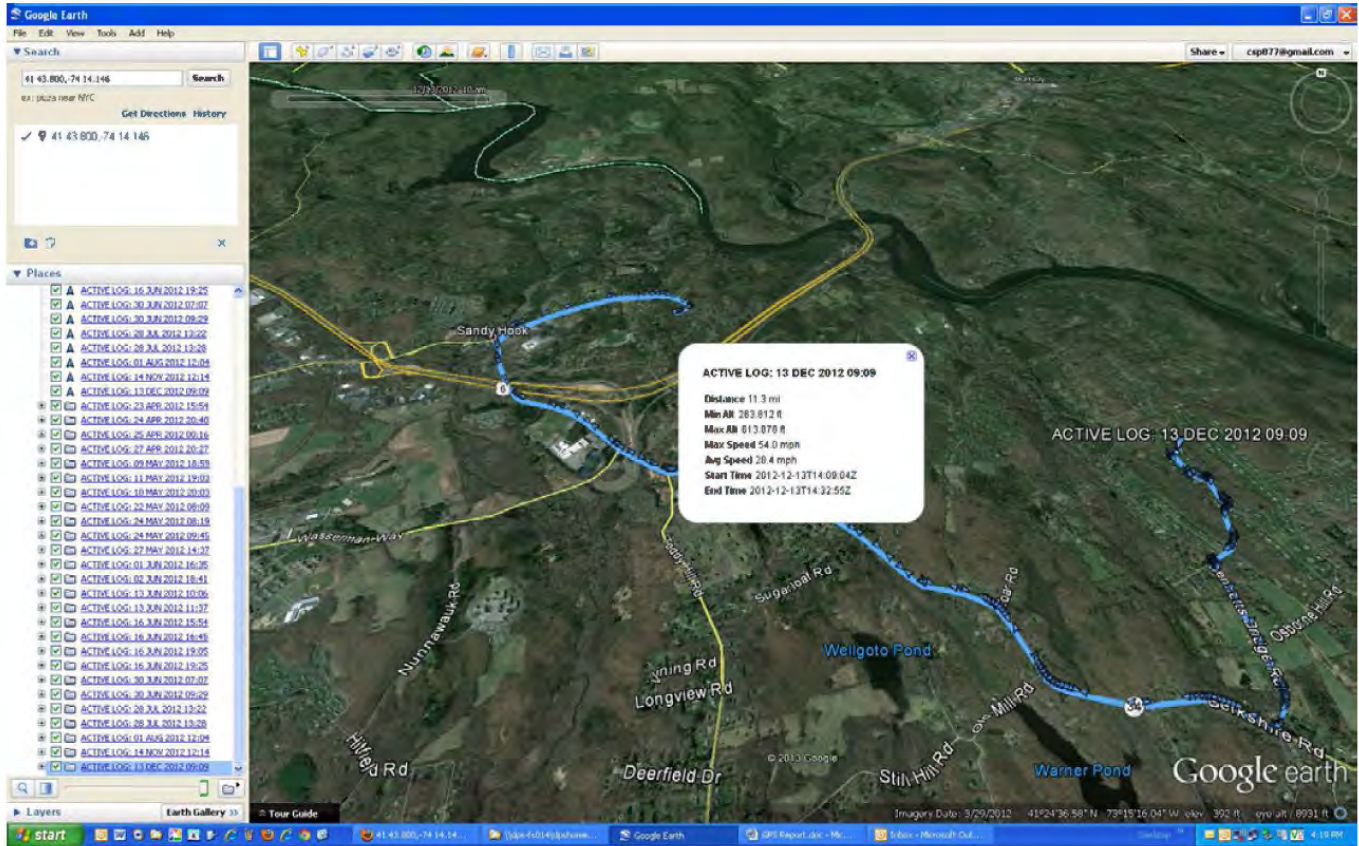




# CONNECTICUT STATE POLICE

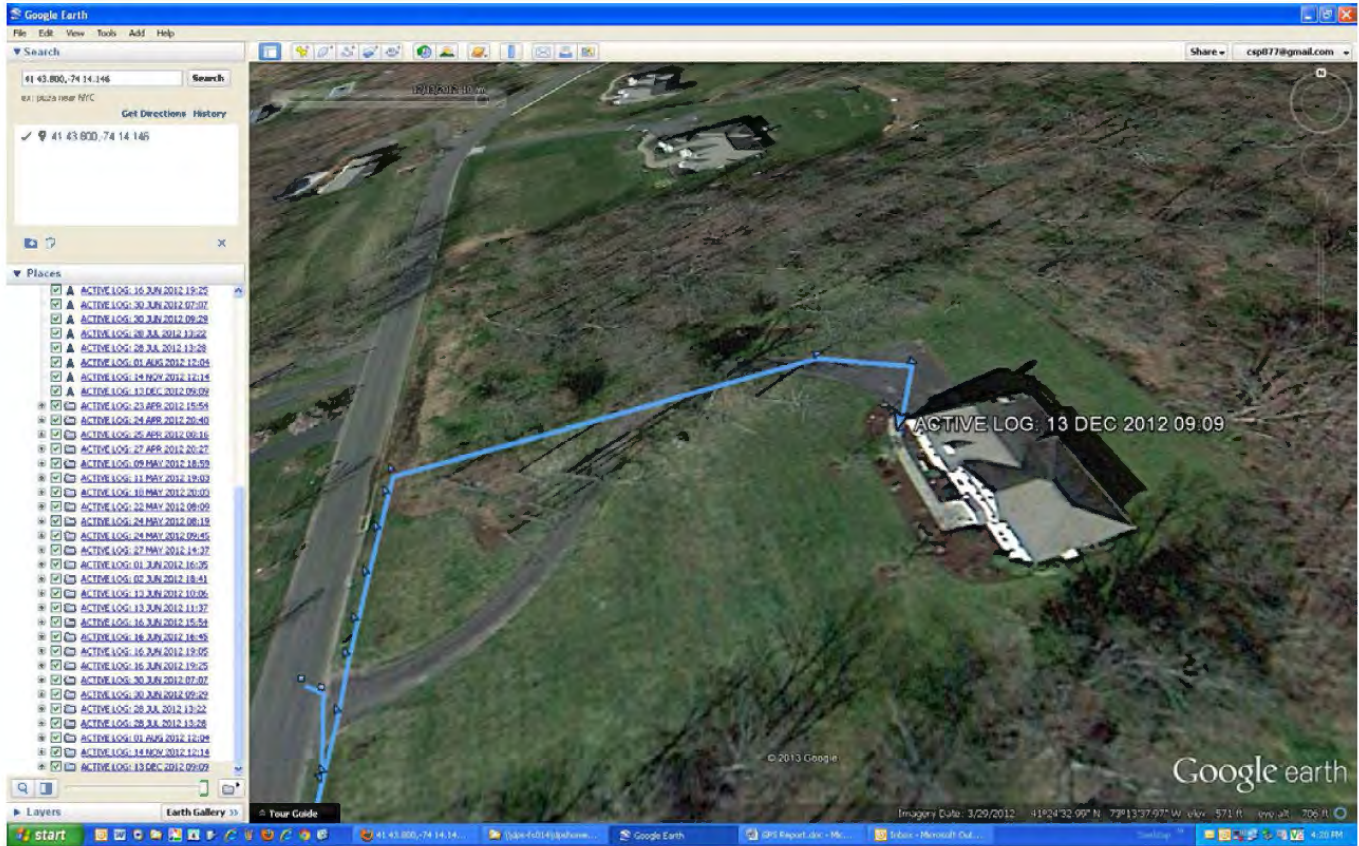
## WESTERN DISTRICT MAJOR CRIME SQUAD

CFS # 12-00 704 559      Sandy Hook Elementary School





**CONNECTICUT STATE POLICE**  
**WESTERN DISTRICT MAJOR CRIME SQUAD**  
*CFS # 12-00 704 559      Sandy Hook Elementary School*

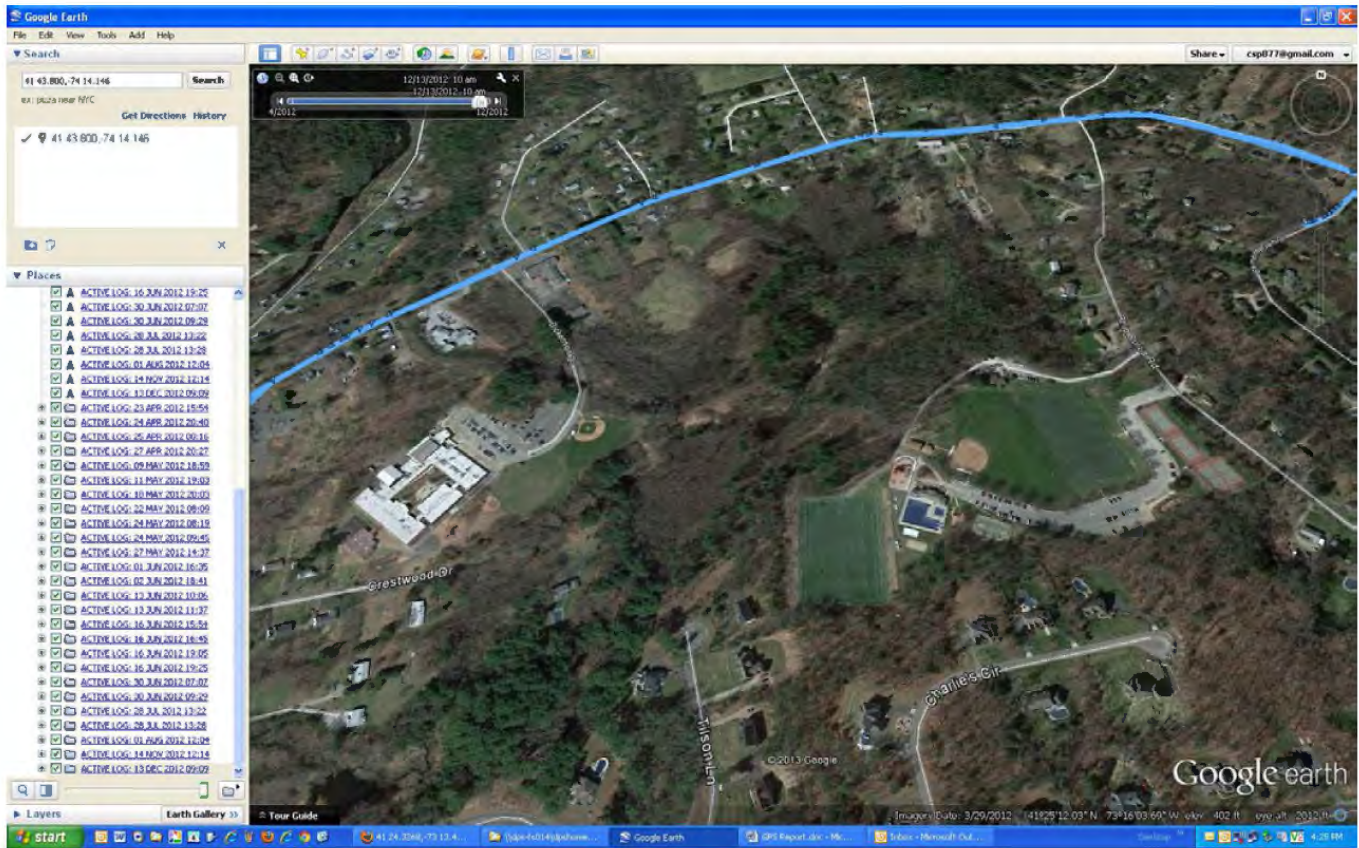


**Detective John Kimball**  
**WDMCS Troop G**





**CONNECTICUT STATE POLICE**  
**WESTERN DISTRICT MAJOR CRIME SQUAD**  
*CFS # 12-00 704 559 Sandy Hook Elementary School*



**Detective John Kimball**  
**WDMCS Troop G**